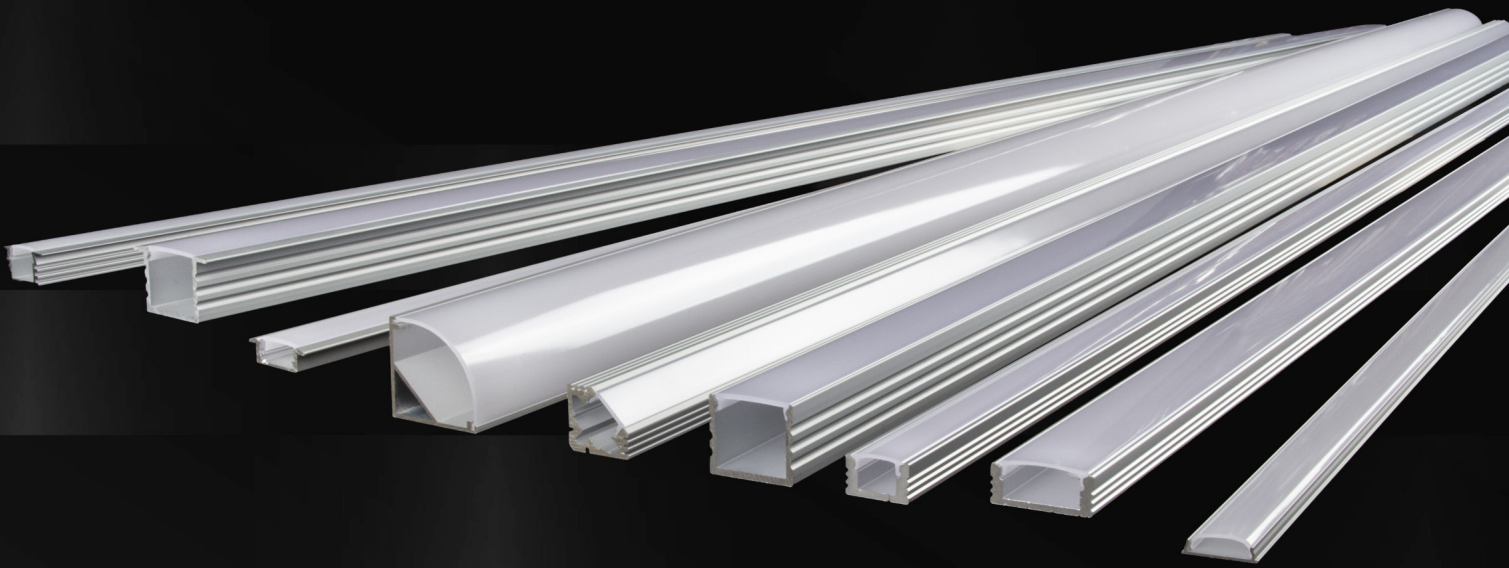


GMLighting®

LED Tape Channel Guide



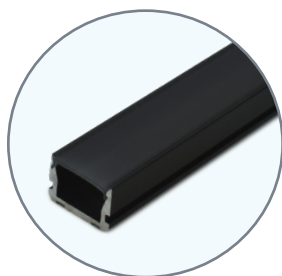
LED TAPE STANDARD MOUNTING CHANNELS

PRODUCT DESCRIPTION

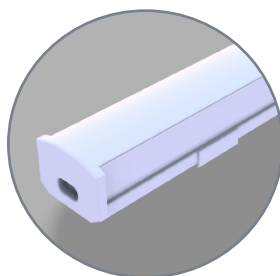
GM Lighting's aluminum channels accept all GM Lighting LEDTask flexible LED Linear tape. Perfect for installations that require a rigid extruded channel that the LED tape can be mounted into. The new **LED-CHL2** standard channel has an updated design to seamlessly integrate with most low voltage GM Lighting LED tapes and EST connectors for easy installation.

LED-CHL2-4

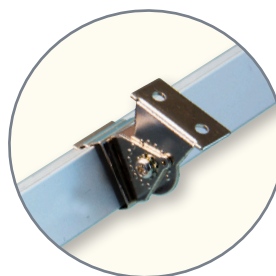
LED-CHL2-4-BK



LED-CHL2-4-BK with
black lens cover
(LED-CHL2-LENS-4-BK)



LED-CHL-EC end cap with
hole and LED-CHL-MC
mounting clips



Optional LED-CHL-AMC
adjustable mounting bracket
attached to LED-CHL

MOUNTING CHANNEL					LED TAPE THAT FITS CHANNEL	CHANNEL NOTES
STANDARD STRAIGHT RUN	Catalog No.	Description	Length	Dimensions	LED Tape Series	Connectors
	LED-CHL	Extruded channel. Includes snap-on frosted lens with mounting clips and screws.	4'		LTR-P Professional Series	Soldered Leads Only Dry Location, (8 to 10mm wide only)
	LED-CHL-6	Extruded channel. Includes snap-on frosted lens with mounting clips and screws.	6'		LTR-S Specification Series (10mm only)	
	LED-CHL-EC	(2) End caps for LED-CHL: one solid, one with hole	N/A		LTR-S COB (Chip On Board)	
	LED-CHL-AMC	(2) Adjustable mounting brackets for LED-CHL	N/A		LTR-S DTW (Dim to Warm)	
	LED-CHL-MC	(2) Mounting clips and screws for LED-CHL	N/A		LTR-S-TW (Twist-Task)	
				LTR-E Economy Series		
STANDARD STRAIGHT RUN VERSION 2	LED-CHL2-4-BK	Straight Black Channel, Snap-on White Lens with Mounting Clips and Screws	4'		LTR-P Professional Series	Soldered Leads Only Dry Location
	LED-CHL2-4-CA	Straight Silver Channel, Snap-on White Lens with Mounting Clips and Screws-	4'			
	LED-CHL2-4-WH	Straight White Channel, Snap-on White Lens with Mounting Clips and Screws	4'			
	LED-CHL2-6-BK	Extruded channel. Includes snap-on frosted lens	6'		LTR-P Professional Series	
	LED-CHL2-6-WH	Extruded channel. Includes snap-on	6'			
	LED-CHL2-LENS-4-BK	Black Lens Cover	4'		LTR-P Professional Series	
	LED-CHL2-LENS-6-BK	Black Lens Cover	6'			
	LED-CHL2-ECB	(2) Black End Caps: 1 Solid, 1 with Hole	N/A		LTR-P Professional Series	
	LED-CHL2-ECG	(2) Gray End Caps: One Solid, One with	N/A			
	LED-CHL2-ECW	(2) White End Caps: One Solid, One with	N/A			
	LED-CHL2-AMC	(2) Adjustable Mounting Brackets	N/A		LTR-P Professional Series	
	LED-CHL2-MC	(2) Mounting Clips and Screws	N/A			

LED TAPE 45° MOUNTING CHANNELS

PRODUCT DESCRIPTION

45° format mounting channels are the perfect vessel that not only insures an architectural quality installation that focuses light distribution at a 45° angle, but also minimizes diode imaging due to the frosted lens that is included with each channel.

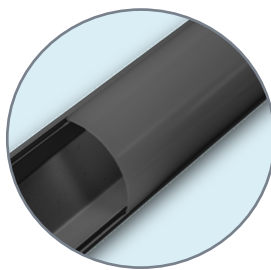


LED-CHL-45

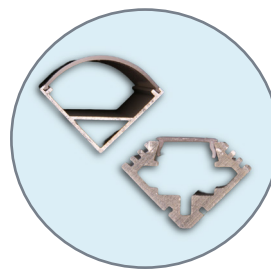
LED-CHL-45-MINI-B



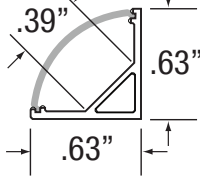
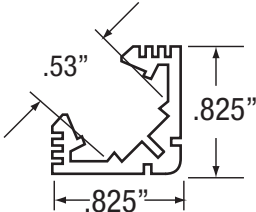
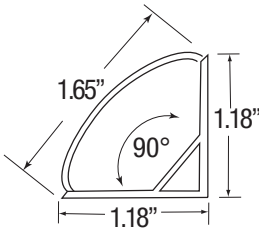
LED-CHL-45-1200-EC end caps either solid or with a wiring hole



LED-CHL-45-M-LENS-BK optional black lens cover for LED-CHL-45-MINI



45° format channels are perfect for angled light distribution and tight corner applications

MOUNTING CHANNEL					LED TAPE THAT FITS CHANNEL	CHANNEL NOTES	
	Catalog No.	Description	Length	Dimensions	LED Tape Series	Connectors	
MINI 45° ANGLE MOUNT	LED-CHL-45-MINI	Extruded angled (45°) channel. Includes snap-on frosted lens with mounting clips and screws.	4'		LTR-P Professional Series	Soldered Leads Only Dry Location, (8 to 10mm wide only)	
	LED-CHL-45-MINI-B	Extruded angled (45°) black channel. Includes snap-on frosted lens with mounting clips and screws.	4'		LTR-S Specification Series		
	LED-CHL-45-MINI-EC	(2) End caps for LED-CHL-45-MINI: one solid, one with hole	N/A		LTR-S COB (Chip On Board)		
	LED-CHL-45-MINI-EC-B	(2) End caps for LED-CHL-MINI-B: one solid, one with hole	N/A		LTR-S DTW (Dim to Warm)		
	LED-CHL-45-MINI-MC	(2) Mounting clips and screws for LED-CHL-45-MINI	N/A		LTR-S-TW (Twist-Task)		
	LED-CHL-45-M LENS BK	Lens Cover in black for LED-CHL-45-MINI	4'		LTR-S-TUN (Tunable White)		
					LTR-E Economy Series		
45° ANGLE MOUNT	LED-CHL-45	Extruded angled (45°) channel. Includes snap-on frosted lens with mounting clips and screws.	4'		LTR-P Professional Series	SureTite ESTC SureTite STC Dry Location, (8 to 10mm wide only)	
	LED-CHL-45-EC	(2) End caps for LED-CHL-45: one solid, one with hole	N/A		LTR-S Specification Series (10mm only)		
	LED-CHL-45-MC	(2) Mounting clips and screws for LED-CHL-45	N/A		LTR-S COB (Chip On Board)		
					LTR-S DTW (Dim to Warm)		
					LTR-S-TW (Twist-Task)		
					LTR-S-TUN (Tunable White)		
					LTR-E Economy Series		
LARGE 45° ANGLE MOUNT	LED-CHL-45-1200	Extruded angled (45°) channel. Includes snap-on frosted lens with mounting clips and screws.	4'		LTR-P Professional Series	SureTite EST WP Wet RTR-EZ SureTite ST	
	LED-CHL-45-1200-EC	(2) End caps for LED-CHL-45: one solid, one with hole	N/A		LTR-S Specification Series (10mm only)		
	LED-CHL-45-1200-MC	(2) Additional mounting clips for LED-CHL-45-1200	N/A		LTR-S COB (Chip On Board)		
					LTR-S DTW (Dim to Warm)		
					LTR-S-TW (Twist-Task)		
				LTR-S-TUN (Tunable White)			
					LTR-P-WP Professional Series Wet Location		
					LTR-S-RGBW / RGBW-WP Specification Series		
					LTR-E Economy Series		

LED TAPE DEEP-SET MOUNTING CHANNELS

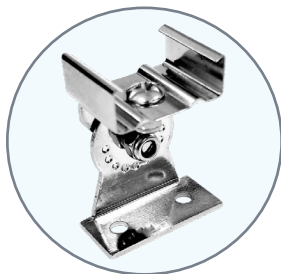
PRODUCT DESCRIPTION

Extra Deep and Mini Deep aluminum mounting channels are the perfect vessel that not only insures an architectural quality installation, but also minimizes diode imaging due to the frosted lens that is included with each channel.

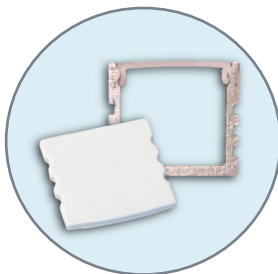


LED-CHL-XD-MD-WH

LED-CHL-XD-MD-B



LED-CHL-XD-AMC
adjustable mounting
bracket for Extra-Deep
Channels



LED-CHL-XD-EC end cap
without hole for deep-
set channels

MOUNTING CHANNEL					LED TAPE THAT FITS CHANNEL	CHANNEL NOTES
Catalog No.		Description	Length	Dimensions	LED Tape Series	Connectors
EXTRA-DEEP	LED-CHL-XD	Extra-Deep Channel, Snap-on White Lens with Mounting Clips and Screws	4'		LTR-P Professional Series	Soldered Leads Only Dry and Wet Location
	LED-CHL-XD-6	Extra-Deep Channel, Snap-on White Lens with Mounting Clips and Screws	6'		LTR-E Economy Series	
	LED-CHL-XD-EC	(2) End Caps: One Solid, One with Hole	N/A		LTR-S Specification Series	
	LED-CHL-XD-AMC	(2) Adjustable Mounting Brackets	N/A		LTR-S COB (Chip On Board)	
	LED-CHL-XD-MC	(2) Mounting Clips and Screws	N/A		LTR-S-DTW (Dim to Warm)	
MINI-DEEP	LED-CHL-XD-MD	Mini-Deep Channel, Snap-on White Lens with Mounting Clips and Screws	4'		LTR-S-RGBW	SureTite EST RTR-EZ SureTite ST
	LED-CHL-XD-MD-B	Mini-Deep Black Channel, Snap-on White Lens with Mounting Clips and Screws	4'		LTR-S-TUN (Tunable White)	
	LED-CHL-XD-MD-WH	Mini-Deep White Channel, Snap-on White Lens with Mounting Clips and Screws	4'		LTR-S-WP-RGBW	
	LED-CHL-XD-MD-6	Mini-Deep Channel, Snap-on White Lens with Mounting Clips and Screws	6'			
	LED-CHL-XD-MD-6-B	Mini-Deep Black Channel, Snap-on White Lens with Mounting Clips and Screws	6'			
	LED-CHL-XD-MD-6-WH	Mini-Deep White Channel, Snap-on White Lens with Mounting Clips and Screws	6'			
	LED-CHL-XD-MD-EC	(2) End Caps: One Solid, One with Hole	N/A			
	LED-CHL-XD-MD-AMC	(2) Adjustable Mounting Brackets	N/A			
	LED-CHL-XD-MD-MC	(2) Mounting Clips and Screws	N/A			

LED TAPE FLANGED MOUNTING CHANNELS

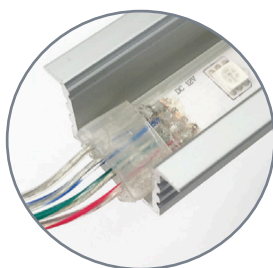
PRODUCT DESCRIPTION

GM Lighting's flanged aluminum mounting channels are the perfect vessel that not only insure an architectural quality installation, but also minimize diode imaging due to the frosted lens that is included with each channel.

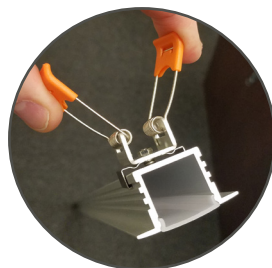


LED-CHL-XD-MD-F-6-B

LED-CHL-XD-MD-F-6-WH



LED-CHL-XD-F channel is perfect for wet location and RGB tapes



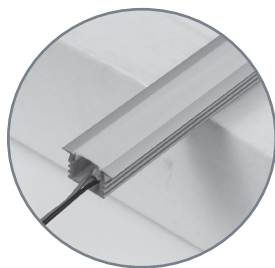
Drywall spring clips and adjustable brackets enable custom installations

MOUNTING CHANNEL					LED TAPE THAT FITS CHANNEL	CHANNEL NOTES
	Catalog No.	Description	Length	Dimensions	LED Tape Series	Tape, Connectors
MINI-DEEP FLANGED	LED-CHL-XD-MD-F	Mini deep format extruded channel with flange. Includes snap-on frosted lens with mounting clips and screws.	4'		LTR-P Professional Series	SureTite EST SureTite ST
	LED-CHL-XD-MD-F-WH	Mini deep format extruded channel with flange. Includes snap-on frosted lens with mounting clips and screws. White.	4'		LTR-S Specification Series	
	LED-CHL-XD-MD-F-B	Mini deep format extruded channel with flange. Includes snap-on frosted lens with mounting clips and screws. Black.	4'		LTR-S COB (Chip On Board)	
	LED-CHL-XD-MD-F-6	Mini deep format extruded channel with flange. Includes snap-on frosted lens with mounting clips and screws.	6'		LTR-S DTW (Dim to Warm)	
	LED-CHL-XD-MD-F-6-WH	Mini deep format extruded channel with flange. Includes snap-on frosted lens with mounting clips and screws. White.	6'		LTR-S-TW (Twist-Task)	
	LED-CHL-XD-MD-F-6-B	Mini deep format extruded channel with flange. Includes snap-on frosted lens with mounting clips and screws. Black.	6'		LTR-S-TUN (Tunable White)	
	LED-CHL-XD-MD-F-DC	(2) Drywall mounting brackets for LED-CHL-XD-MD-F	N/A		LTR-P-WP Professional Series Wet Location	
	LED-CHL-XD-MD-F-EC	(2) End caps for LED-CHL-XD-MD-F. One solid, one with hole.	N/A		LTR-S-RGBW / RGBW-WP Specification Series	
EXTRA DEEP FLANGED	LED-CHL-XD-F	Extra deep format extruded channel with flange. Includes snap-on frosted lens with mounting clips and screws.	4'		LTR-E Economy Series	SureTite EST WP Wet RTR-EZ SureTite ST
	LED-CHL-XD-F-6	Extra deep format extruded channel with flange. Includes snap-on frosted lens with mounting clips and screws.	6'		LTR-P Professional Series	
	LED-CHL-XD-F-DC	(2) Drywall mounting brackets for LED-CHL-XD-F	N/A		LTR-S Specification Series	
	LED-CHL-XD-F-EC	(2) End caps for LED-CHL-XD-F. One solid, one with hole.	N/A		LTR-S COB (Chip On Board)	
					LTR-S DTW (Dim to Warm)	
					LTR-S-TW (Twist-Task)	
					LTR-S-TUN (Tunable White)	
					LTR-P-WP Professional Series Wet Location	
					LTR-S-RGBW / RGBW-WP Specification Series	
					LTR-E Economy Series	

LED TAPE WIDE, SLIM & FLEXIBLE MOUNTING CHANNELS

KEY FEATURES

- Aluminum extrusions in 4' and 6' lengths
- Each channel comes complete with lens and mounting hardware
- Accessories designed for channel come right after channel listing



Choice of widths and positions assures a fit for all GM LED Linear Tape - dry and wet location



LED-CHL-BND enables LED tape to follow curves and bends while being protected by flexible frosted lens

LED-CHL-SLIM

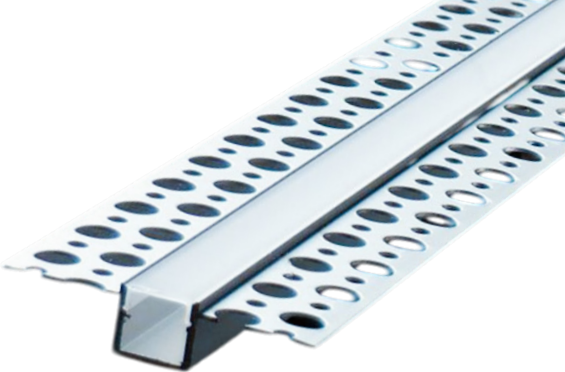
LED-CHL-W

MOUNTING CHANNEL					LED TAPE THAT FITS CHANNEL	CHANNEL NOTES
	Catalog No.	Description	Length	Dimensions	LED Tape Series	Tape, Connectors
FLEXIBLE	LED-CHL-BND	Extruded bendable channel. Includes snap-on frosted lens with mounting clips and screws.	4'		LTR-P Professional Series	Soldered Leads Only Dry Location, (8 to 10mm wide only)
	LED-CHL-BND-6	Extruded bendable channel. Includes snap-on frosted lens with mounting screws.	6'		LTR-S Specification Series	
	LED-CHL-BND-EC	(2) End caps for LED-CHL-BND: one solid, one with hole.	N/A		LTR-S COB (Chip On Board)	
	LED-CHL-BND-MC	(2) Mounting clips and screws for LED-CHL-BND	N/A		LTR-S DTW (Dim to Warm)	
SLIM	LED-CHL-SLIM	Extruded slim channel. Includes snap-on frosted lens with mounting clips and screws	4'		LTR-S-TW (Twist-Task)	Soldered Leads Only Dry Location, (8 to 10mm wide only)
	LED-CHL-SLIM-BRACKETS	(2) Mounting brackets for LED-CHL-SLIM	N/A		LTR-E Economy Series	
	LED-CHL-SLIM-EC	(2) Solid end caps for LED-CHL-SLIM	N/A			
WIDE	LED-CHL-W	Wide format extruded channel. Includes snap-on frosted lens with mounting clips and screws.	4'		LTR-P Professional Series	SureTite EST RTR-EZ SureTite ST
	LED-CHL-W-6	Wide format extruded channel. Includes snap-on frosted lens with mounting clips and screws.	6'		LTR-S Specification Series	
	LED-CHL-W-AMC	(2) Adjustable mounting brackets for LED-CHL-W	N/A		LTR-S COB (Chip On Board)	
	LED-CHL-W-EC	(2) End caps for LED-CHL-W: one solid, one with hole.	N/A		LTR-S DTW (Dim to Warm)	
	LED-CHL-W-MC	(2) Additional mounting clips for LED-CHL-45-1200	N/A		LTR-S-TW (Twist-Task)	
					LTR-S-TUN (Tunable White)	
					LTR-P-WP Professional Series Wet Location	
					LTR-S-RGBW / RGBW-WP Specification Series RGBW and RGBW Wet Location	
					LTR-E Economy Series	

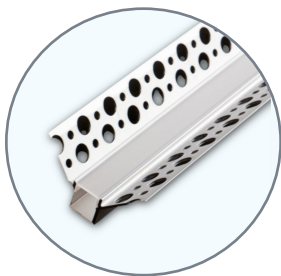
LED TAPE SLIM MUD-IN MOUNTING CHANNELS

PRODUCT DESCRIPTION

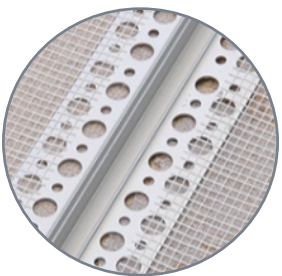
A slim format, extruded aluminum channel designed especially for mud-in installations. Available in 6' lengths, the aluminum perforated mud-in frame that flanks both sides of the channel enables easy mudding installation.



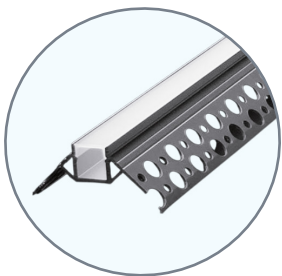
LED-CHL-MI-SST6



LED-CHL-MI-ISC6 extruded aluminum channel designed especially for inside corner mud-in installations



LED-CHL-MI-SST6 shown layed in with mud-in collar



LED-CHL-MI-OSC6 extruded aluminum channel designed especially for outside corner mud-in installations

	MOUNTING CHANNEL				LED TAPE THAT FITS CHANNEL	CHANNEL NOTES
	Catalog No.	Description	Length	Dimensions	LED Tape Series	Connectors
SLIM STRAIGHT LINEAR	LED-CHL-MI-SST6	Standard extruded aluminum mud-in slim channel. Includes snap-on frosted lens.	6'		LTR-P Professional Series	Soldered Leads Only Dry Location Tape Only
	LED-CHL-MI-SST-EC	(2) End caps for LED-CHL-MI-SST6: one solid, one with hole	N/A		LTR-S Specification Series	
INSIDE CORNER MUD-IN	LED-CHL-MI-ISC6	Standard extruded aluminum mud-in inside corner channel. Includes snap-on frosted lens.	6'		LTR-S COB (Chip On Board)	
	LED-CHL-MI-ISC-EC	(2) End caps for LED-CHL-MI-ISC: one solid, one with hole.	N/A		LTR-S DTW (Dim to Warm)	
OUTSIDE CORNER MUD-IN	LED-CHL-MI-OSC6	Standard extruded aluminum mud-in outside corner channel. Includes snap-on frosted lens.	6'		LTR-S-TW (Twist-Task)	
	LED-CHL-MI-OSC-EC	(2) End caps for LED-CHL-MI-OSC: one solid, one with hole.	N/A		LTR-E Economy Series	

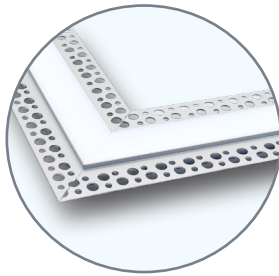
LED TAPE STANDARD MUD-IN & CORNER CHANNELS

PRODUCT DESCRIPTION

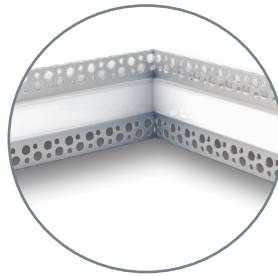
Recess illuminated sections of light for clean looking and creative design options. The aluminum, perforated frame enables easy mud-in installation. Includes snap-on frosted lens to produce even illumination and reduce pixelization. Standard extruded inside and outside corner LED tape mud-in channels come complete with lens.



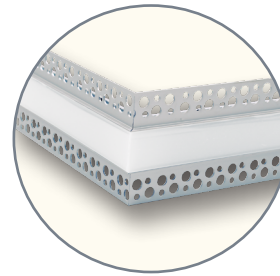
LED-CHL-MI-ST6



LED-CHL-MI-ST8-FC90
Flat corner shown



LED-CHL-MI-ST8-IC90
Inside corner shown



LED-CHL-MI-ST8-OC90
Inside corner shown

MOUNTING CHANNEL					LED TAPE THAT FITS CHANNEL	CHANNEL NOTES
Catalog No.		Description	Length	Dimensions	LED Tape Series	Connectors
STRAIGHT LINEAR	LED-CHL-MI-ST6	Standard extruded aluminum mud-in channel. Includes snap-on frosted lens.	6'		LTR-P Professional Series	SureTite EST Dry Location Tape Only
	LED-CHL-MI-ST-EC	(2) End caps for LED-CHL-MI-ST6 one solid, one with hole.	N/A		LTR-S Specification Series LTR-S COB (Chip On Board) LTR-S DTW (Dim to Warm) LTR-S-TW (Twist-Task) LTR-S-RGBW / RGBW-WP Specification Series RGBW and RGBW Wet Location LTR-E Economy Series	
90° FLAT CORNER	LED-CHL-MI-ST8-FC90	90° Flat Corner for standard extruded aluminum mud-in slim channel. Includes snap-on frosted lens.	N/A		LTR-P Professional Series	Soldered Leads Only Dry Location Tape Only
	LED-CHL-MI-ST8-EC	(2) End caps for LED-CHL-MI-ST8: one solid, one with hole.	N/A		LTR-S Specification Series LTR-S COB (Chip On Board) LTR-S DTW (Dim to Warm) LTR-S-TW (Twist-Task) LTR-E Economy Series	
90° INSIDE CORNER	LED-CHL-MI-ST8-IC90	90° Inside Corner for standard extruded aluminum mud-in slim channel. Includes snap-on frosted lens.	N/A		LTR-P Professional Series	Soldered Leads Only Dry Location Tape Only
	LED-CHL-MI-ST8-EC	(2) End caps for LED-CHL-MI-ST8: one solid, one with hole.	N/A		LTR-S Specification Series LTR-S COB (Chip On Board) LTR-S DTW (Dim to Warm) LTR-S-TW (Twist-Task) LTR-E Economy Series	
90° OUTSIDE CORNER	LED-CHL-MI-ST8-OC90	90° Outside Corner for standard extruded aluminum mud-in slim channel. Includes snap-on frosted lens.	N/A		LTR-P Professional Series	Soldered Leads Only Dry Location Tape Only
	LED-CHL-MI-ST8-EC	(2) End caps for LED-CHL-MI-ST8: one solid, one with hole.	N/A		LTR-S Specification Series LTR-S COB (Chip On Board) LTR-S DTW (Dim to Warm) LTR-S-TW (Twist-Task) LTR-E Economy Series	

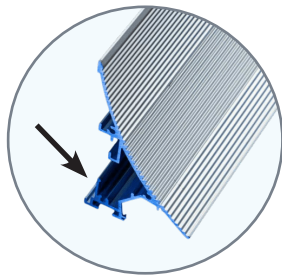
LED TAPE COVE & WALK OVER MUD-IN MOUNTING CHANNELS

PRODUCT DESCRIPTION

An extruded dual aluminum channel designed especially for indoor or dry location mud-in cove installations. Available in 6' lengths, the curved striated aluminum mud-in frame that runs the length of the mounting channel enables easy mudding.



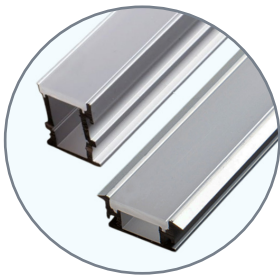
LED-CHL-XD-MD-F-6-B



LED-CHL-MI-CMCH6 mounting channels comes included for Cove Channel



LED-CHL-MI-C6 extruded mud-in channel shown to scale



LED-CHL-WOD6 (top left) and LED-CHL-WOS6 (bottom right) deep mud-in walk over channels

MOUNTING CHANNEL				LED TAPE THAT FITS CHANNEL	CHANNEL NOTES	
	Catalog No.	Description	Length	Dimensions	LED Tape Series	Connectors
COVE WITH MOUNTING CHANNEL	LED-CHL-MI-C6	Standard extruded aluminum mud-in channel for coves. LED-CHL-MI-CMCH6 (included, see below) With frosted lens with mounting clips and screws.	6'		LTR-P Professional Series	SureTite EST Dry Location Tape Only
	LED-CHL-MI-CEC	(2) End caps for LED-CHL-MI-C6: one solid, one with hole.	N/A		LTR-S Specification Series	
	LED-CHL-MI-CMCH6 (INCLUDED WITH LED-CHL-MI-C6)	Mounting channel (included) for LED-CHL-MI-C6 Cove channel.	N/A		LTR-S COB (Chip On Board)	
					LTR-S DTW (Dim to Warm)	
					LTR-S-TW Twist-Task	
					LTR-S-RGBW (Indoor location only)	RTR-EZ Dry Location Tape Only
					LTR-E Economy Series	SureTite ST Dry Location Tape Only
WALK OVER SHALLOW	LED-CHL-WOS6	Standard extruded aluminum mud-in walk over shallow depth channel. Includes frosted lens (silicone required for installation).	6'		LTR-P Professional Series	Soldered Leads Only Dry Location Tape Only
	LED-CHL-WOS-EC	(2) End caps for LED-CHL-WOS: one solid, one with hole.	N/A		LTR-S Specification Series	
					LTR-S COB (Chip On Board)	
					LTR-S DTW (Dim to Warm)	
					LTR-S-TW (Twist-Task)	
					LTR-E Economy Series	
WALK OVER DEEP	LED-CHL-WOD6	Standard extruded aluminum mud-in walk over deep depth channel. Includes frosted lens (silicone required for installation).	6'		LTR-P Professional Series	Soldered Leads Only Dry Location Tape Only
	LED-CHL-WOD-EC	(2) End caps for LED-CHL-WOD: one solid, one with hole.	N/A		LTR-S Specification Series	
					LTR-S COB (Chip On Board)	
					LTR-S DTW (Dim to Warm)	
					LTR-S-TW (Twist-Task)	
					LTR-E Economy Series	

LED TAPE OVERLAY LENS

A low-profile arched clear or frosted lens that surrounds any size LEDTask Series tape. Provides an economical protective shield while eliminating diode imaging. Easy to install and cuttable in the field. Made of lightweight polycarbonate plastic.



LED TAPE OVERLAY LENS	MOUNTING CHANNEL				LED TAPE THAT FITS CHANNEL	CHANNEL NOTES
	Catalog No.	Description	Length	Dimensions	LED Tape Series	Tape, Connectors
	TOL4-CL	LED tape overlay lens. Clear polycarbonate plastic with 3M peel and stick adhesive rails. UV stable.	4'		LTR-P Professional Series	SureTite EST RTR-EZ SureTite ST
					LTR-S Specification Series	
					LTR-S COB (Chip On Board)	
					LTR-S DTW (Dim to Warm)	
					LTR-S-TW (Twist-Task)	
					LTR-S-TUN (Tunable White)	
					LTR-P-WP Professional Series Wet Location	
					LTR-S-RGBW / RGBW-WP Specification Series RGBW and RGBW Wet Location	
					LTR-E Economy Series	
	TOL4-FR	LED tape overlay lens. Frosted polycarbonate plastic with 3M peel and stick adhesive rails. UV stable.	4'			

LED-CHL-45

LED-CHL

LED-CHL-45-1200

LED-CHL-BND

LED-CHL-SLIM

LED-CHL-XD

LED-CHL-W

LED-CHL-XD-F

LED-CHL-XD-MD-F

LED-CHL-XD-MD



GMLighting®

"Lighting Enhanced by Design"

18700 Ridgeland Ave.
Unit 150
Tinley Park, IL 60477
Toll-Free: (866) 671-0811
Fax (708) 478-2640

tech@gmlighting.net
www.gmlighting.net

Specifications are subject to change without notice.