

⚠ WARNING!

BEFORE YOU START:

- Please check local electrical codes before beginning
- Turn power off before installing
- Make sure to use properly rated wire

NOTE: WE RECOMMEND THAT YOU ENGAGE A QUALIFIED AND LICENSED ELECTRICIAN. ALL SYSTEM PARTS ARE COMPATIBLE WITH AND ONLY WORK TOGETHER. DO NOT ATTEMPT TO SWAP OUT OTHER MANUFACTURERS PRODUCTS. INSURE THAT BOTH WALL SWITCH AND WIRING COMPARTMENT IS GROUNDED IN ACCORDANCE WITH NEC OR LOCAL ELECTRICAL CODES.

DO NOT INSTALL IN AN APPLICATION THAT IS OUTSIDE OF THE PRODUCTS LISTED AMBIENT TEMPERATURE AND IN AN AREA THAT IS NOT EASILY ACCESSED FOR SERVICE REQUIREMENTS. DOWN LIGHT IS IC RATED.

1. Familiarize yourself with the down light fixture model to be installed. Refer to Table (Fig. 1) for cutout hole size. 120V electrical power whip should be installed by a licensed electrician before proceeding. **CAUTION: Space behind location of downlight must be clear of building materials and electrical components.**

2. SELECT COLOR TEMP:

Select color temperature of light source. You'll find the color temp. selector switch on the front of the junction box. **You must choose one of five color temperatures before mounting the Power Supply Box (Fig. 4A).**

3.1. INSTALLATION PREP FOR REMODEL:

Determine the position of your down light(s) and trace a circle on surface material. Using a keyhole saw or hole saw - cut through surface (Fig. 2). **NOTE: It is easier to install the power supply box at this point. Go to Steps 4 and 5.1.**

3.2. INSTALLATION PREP FOR NEW CONSTRUCTION:

Use UNV-NCP new construction mounting plate. Consult mounting instructions that come with this plate (Fig. 3). Be sure you use correct aperture cut-out (Fig. 1) to prepare the plate for use. New Construction Plate assists with position of hole location and Power Supply Box mount before drywall is installed. **Do steps 4 and 5.2.**

4. CONNECT INCOMING POWER:

Open Power Supply box cover and remove appropriate knock-outs to install fittings (1/2" trade size) with power leads. Connect Power Supply Box to 120V power source using flexible conduit or Romex (by others) through the mounting hole. Using wire connectors, connect incoming leads to power supply input leads. Ground to Green wire, Neutral to White wire, Hot Line to Black wire of box (Fig. 4A).

MOUNT JUNCTION BOX AND PLATE INSTALL:

5.1. REMODEL INSTALLATION:

Secure junction box in ceiling space. Use keyhole slots on back of box to hang using two round head screw (by others). (Fig 4B). Proceed to feed junction box up into hole (Fig. 4C), leaving the quick connect cord hanging out of the trim hole for easy access. **Go to Step 6 next.**

5.2. NEW CONSTRUCTION & PLATE INSTALL:

Mount power supply box to New Construction Plate before installing plate (see locations in Fig. 3). Position plate at bottom of studs, where the downlight hole in the ceiling will be. Nail plate to studs and install drywall. Locate hole in plate with stud-finder and cut out hole to match plate. Pull the quick connect cord out of the trim hole for easy access.

6. ASSEMBLING FIXTURE & MOUNTING TRIM:

SELECT HOUSING OPTION:

CATALOG NO.	BEAM
MDL-4HFL-HL-5CCT	38°
MDL-4HWFL-HL-5CCT	60°

SELECT TRIM OPTION:

SMOOTH			STEPPED		
CATALOG NO.	SHAPE	COLOR	CATALOG NO.	SHAPE	COLOR
MDL-4R-TRSM-BK	Round	Black	MDL-4R-TRST-BK	Round	Black
MDL-4R-TRSM-WH	Round	White	MDL-4R-TRST-WH	Round	White
MDL-4S-TRSM-BK	Square	Black	MDL-4S-TRST-BK	Square	Black
MDL-4S-TRSM-WH	Square	White	MDL-4S-TRST-WH	Square	White

There are several trim options for various applications. A housing and trim are required to complete the fixture. (Fig. 5). Take selected trim and align it with the light engine. Press and twist to tighten in place (Fig. 6).

7. CONNECT FIXTURE TRIM:

Connect the quick connector by inserting and twisting the male/female connectors until tight (Fig. 7). Depress torsion mounting springs, and push MDL-4H assembly up into hole (Fig. 8) letting the springs snap into place. Assure that trim is held firmly. Make final adjustments to trim position if needed.

TOOLS NEEDED:

- Hole saw or keyhole saw
- Measuring Tape
- Stud finder

PARTS INCLUDED:

- Downlight housing and trim chosen separately
- Cut-out hole template
- Wire connectors

FIG. 1

CUT-OUT DIMENSIONS/APPLICATIONS		
CATALOG NO. PREFIX	HOLE DIA.	APPLICATION
MDL-4HFL-5CCT & MDL-4R or MDL-4S Trim	3-3/4"	38° beam spread
MDL-4HWFL-5CCT & MDL-4R or MDL-4S Trim	3-3/4"	60° beam spread

MAX SHEETROCK THICKNESS = 5/8"

FIG. 2

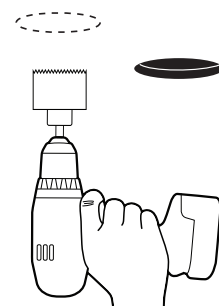


FIG. 3

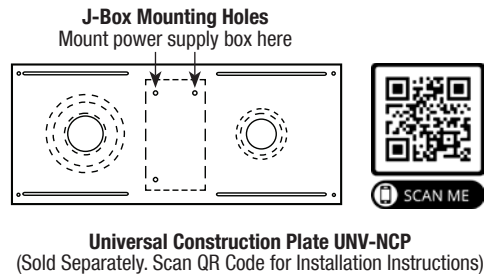


FIG. 4A

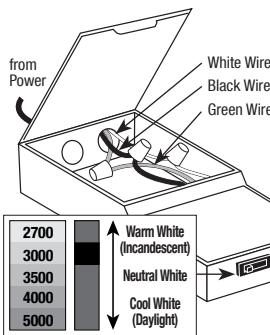


FIG. 4B

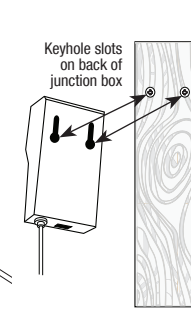


FIG. 4C

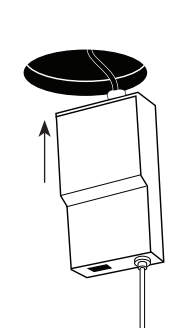


FIG. 5

See chart at left for Housing and Trim Options

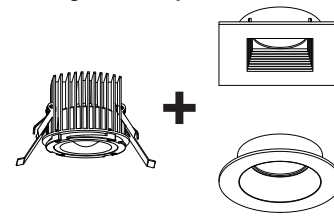


FIG. 6

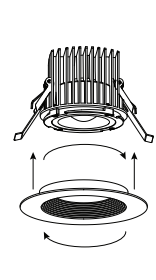


FIG. 7

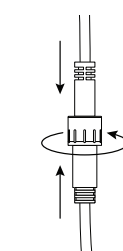


FIG. 8

