



GMLighting®

18700 Ridgeland Ave.
Tinley Park, IL 60477

Technical Info:
tech@gmlighting.net



Adding Alexa Voice Commands to LUXcontrol

1

Log Onto LUXcontrol™. Find your LUXcontrol icon on your smart phone and open the LUXcontrol app. Sign in.

2

Grant Permissions. Granting our app access to data does not put your personal information at risk, but it does enable us to better serve you through apps like Alexa®.

3

You're Home. Your 'My Home' window shows all data that you've granted permissions to show, and the GM fixtures that you've connected to LUX. **Let's hook up Alexa!**

4

Time to Choose. You can have Alexa® control any fixture or group that you have connected to LUX. Let's choose this outlet that's at the front door. Click it.

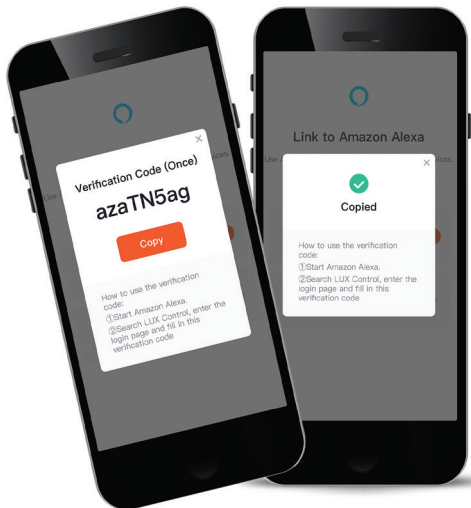
5

Advance to Pairing With Alexa. Tap the three dots in the upper right corner of your screen.

6

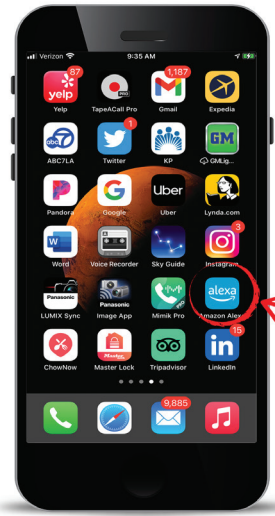
Find the Alexa Icon. On this device info screen, you'll find the Alexa logo under Third Party Control (if you are not on this page, look for the 3 dots at the top of previous page). Go ahead and tap it.

7



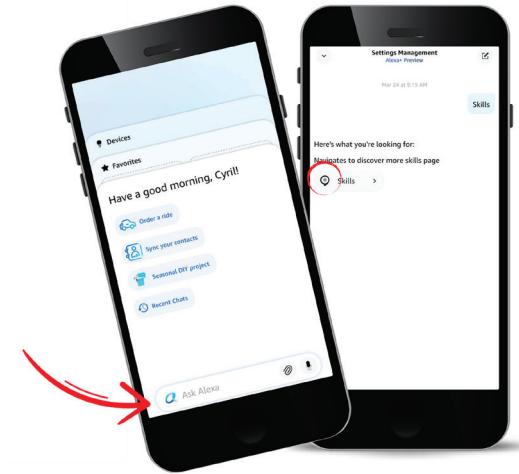
Verification Code. Click Link with Verification Code to get a code that you will use with the Alexa app. Make sure that you get the Copied Successfully confirmation.

8



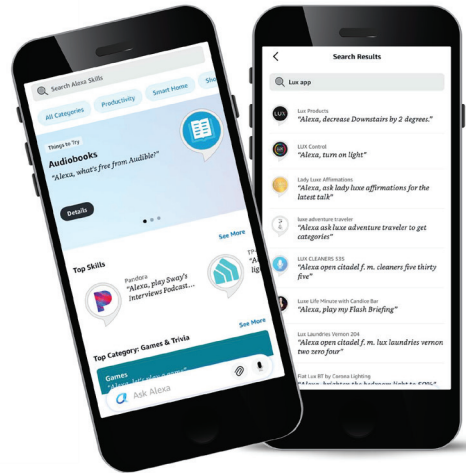
Open Alexa App. Once you've copied the special code, open the Alexa app and look at the bottom of the screen for Devices. Click it.

9



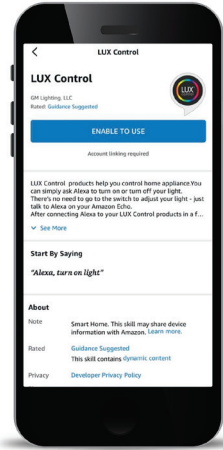
Open Your Alexa App. Go to the "Ask Alexa" section and search "Skills". Click the link provided.

10



Getting Close! In the tab "Skills", search up "Lux Control". Select the correct app and move forward to the next step.

11



Getting Close! After selecting the app, select the option to "ENABLE TO USE", and paste the code received from the Lux Control App.

