

LTR-S Specification Series

24VDC RGBW Dry Location LED Tape Specification Sheet



Project Name	Type
Catalog #	Date

PRODUCT OVERVIEW

GM's RGBW is a quantum leap beyond RGB. With the addition of a 3000K White element, a virtually unlimited palette of color and brightness is enabled. For general activity use, utilize the white light component. Designed for high quality light illumination. Available in 16'-4" (5M) or 32'-8" (10M) reels.

FEATURES

- RGB with 3000K White 4-in-One LED chip
- Dry location
- Cuttable every 4"
- Custom lengths available - consult factory
- 60 LED's / meter
- 120° viewing angle
- 3M adhesive back
- Maximum run on a given lead is 16'-4" (6W) and 32'-8" (3W)

SPECIFICATIONS

ELECTRICAL

- 24V
- 3W or 6W Per Foot

OPERATING TEMP

- -4°F to 122°F

CERTIFICATION

- UL
- Class 2
- Closet Rated

WARRANTY

- 5-year warranty when paired with GM power supply.
Note: 24V non-dimming power supply required.



ORDERING INFORMATION

Example: LTR-S-24V-3.0W-RGBW-16

Model	-	Series	-	Voltage	-	Wattage	-	Type	-	Reel Length
LTR		S		24V		3.0W		RGBW		16
LTR		S		24V		3.0W		RGBW		32
LTR		S		24V		6.0W		RGBW		16

ACCESSORIES

Model	Description
RGBW-RTR-EZ-1	RGB EZ tape to tape connector
RGBW-RTR-EZ-3	3" RGB EZ tape to tape connector
RGBW-RTR-EZ-12	12" RGB EZ tape to tape connector
RGBW-RTR-EZ-24	24" RGB EZ tape to tape connector
RGBW-RTR-EZ-36	36" RGB EZ tape to tape connector
RGBW-RTR-EZ-60	60" RGB EZ tape to tape connector
RGBW-RPS-EZ-60	60" RGB EZ tape to controller connector

Your LED Tape Specification Checklist:

1. Select Tape
2. Select Connectors
3. Select Channels
4. Select Controllers
5. Select Power Supplies

INSTALL SHEET



LTR-S Specification Series

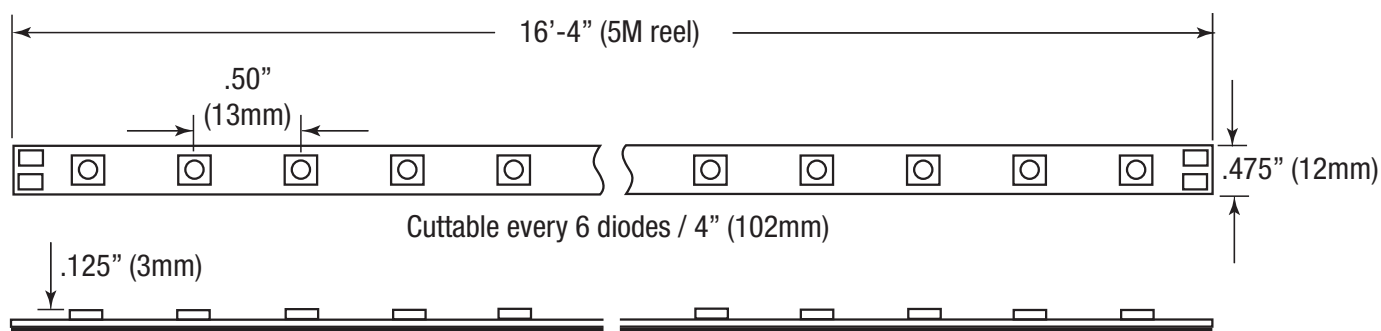
24VDC RGBW Dry Location LED Tape Specification Sheet



Catalog No.	Length	Wattage / ft.	Lumens in 3000K mode only	Type	Max. Run
LTR-S-24V-3.0W-RGBW-16	16'-4" / 5M	3W	65	RGBW	32'-8"
LTR-S-24V-3.0W-RGBW-32	32'-8" / 10M	3W	65	RGBW	32'-8"
LTR-S-24V-6.0W-RGBW-16	16'-4" / 5M	6W	118	RGBW	16'-4"

16'-4" and 32'-8" reels includes (1) 48" power lead affixed to tape. 16'-4" reels include (3) extra power leads and 32'-8" reels include (6) extra power leads.
Kelvin temperature (color) ±100K.

DIMENSIONS



RGBW-RTR-EZ-1/3/12/24/36/60
RGBW EZ Tape to Tape Connectors
1", 3", 12", 24", 36", 60"



RGBW-RPS-EZ-60
RGBW EZ Tape to Power Supply 60" Connectors

LTR-S Specification Series

24VDC RGBW Dry Location LED Tape Specification Sheet



COMPATIBLE CONTROLLERS

Model	Description
SHWC-RGBW	LUXcontrol Smart 2.4 GHz WiFi Controller, Standard 12V/24V Low Voltage, RGBW, 4-Channel / 5-Wire
SHWC-RGBW-RPT	LUXcontrol Universal Smart Power Repeater
DMX-LT-995	5-Channel DMX Decoder
RGBW-DMX-WC	DMX Wall Controller
HC-RF-UNV-5CH	Universal 1-5 Channel RF Remote Control
CM-RF-UNV-5CH	Universal 1-5 Channel Control Module
RPT-UNV-5CH	Universal 1-5 Channel Repeater Amplifier

RECOMMENDED DRIVERS

Catalog No.	Description	Watts	Weight	Dimensions
LD-E-UNV30	12VDC / 24VDC - 30W - 120V or 277V - 50/60Hz 12V/2.5A - 24V/1.25A - Class 2 Auto reset.	30W	1.0 lbs.	6.10"L x 3.35"W x 1.33"H
LD-E-UNV60	12VDC / 24VDC - 60W - 120V or 277V - 50/60Hz 12V/5A - 24V/2.5A - Class 2 Auto reset.	60W	2.5 lbs.	8.25"L x 4.10"W x 1.56"H
LD-E-UNV96-24	24VDC - 96W - 120V or 277V - 50/60Hz - 4 amps Class 2 - Auto reset.	96W	2.5 lbs.	8.25"L x 4.10"W x 1.56"H
LD-E-UNV200-24	24VDC - 192W - 120V or 277V - 50/60Hz - 4 amps per channel (2) Class 2 - Auto reset. 2 X 96W channel.	192W	4.7 lbs.	9.50"L x 6.35"W x 1.56"H
LD-E-UNV300-24	24VDC - 288W - 120V or 277V - 50/60Hz - 4 amps per channel (3) Class 2 - Auto reset. 3 X 96W channel.	288W	4.7 lbs.	9.50"L x 6.35"W x 1.56"H

Please see our website for updated power supply specifications and information.

CORD AND PLUG DRIVERS

Catalog No.	Description	Watts	Weight	Dimensions
LTP24-48	24VDC - 48W - 2 amps - 120V - 120V Cord (72") and plug. Short circuit, overload protection - LED indicator for power on. UL listed	48W	1.8 lbs.	4.68"L x 2.05"W x 1.25"H
LTP24-90	24VDC - 90W - 3.75 amps - 120V - 120V Cord (72") and plug. Short circuit, overload protection - LED indicator for power on. UL listed	90W	1.8 lbs.	4.68"L x 2.05"W x 1.25"H

Please see our website for updated power supply specifications and information.

LTR-S Specification Series

24VDC RGBW Dry Location LED Tape Specification Sheet



COMPATIBLE CHANNELS - (fit RGBW-RTR-EZ connectors on pg. 1)

EXTRA DEEP

Catalog No.	Description	Length	Dimensions
LED-CHL-XD	Extra deep format extruded channel. Includes snap-on frosted lens with mounting clips and screws.	4'	
LED-CHL-XD-6	Extra deep format extruded channel. Includes snap-on frosted lens with mounting clips and screws.	6'	
LED-CHL-XD-AMC	(2) Adjustable mounting brackets for LED-CHL-XD	N/A	
LED-CHL-XD-EC	(2) End caps for LED-CHL-XD. One solid, one with hole.	N/A	
LED-CHL-XD-MC	(2) Mounting clips and screws for LED-CHL-XD	N/A	

EXTRA DEEP FLANGED

LED-CHL-XD-F	Extra deep format extruded channel with flange. Includes snap-on frosted lens with mounting clips and screws.	4'	
LED-CHL-XD-F-6	Extra deep format extruded channel with flange. Includes snap-on frosted lens with mounting clips and screws.	6'	
LED-CHL-XD-F-DC	(2) Drywall mounting brackets for LED-CHL-XD-F	N/A	
LED-CHL-XD-F-EC	(2) End caps for LED-CHL-XD-F. One solid, one with hole.	N/A	

45° ANGLE MOUNT

Catalog No.	Description	Length	Dimensions
LED-CHL-45	Extruded angled (45°) channel. Includes snap-on frosted lens with mounting clips and screws.	4'	
LED-CHL-45-EC	(2) End caps for LED-CHL-45 - one solid, one with hole	N/A	
LED-CHL-45-MC	(2) Mounting clips and screws for LED-CHL-45	N/A	

45° LARGE ANGLE MOUNT

LED-CHL-45-1200	Extruded angled (45°) channel. Includes snap-on frosted lens with mounting clips and screws.	4'	
LED-CHL-45-1200-EC	(2) End caps for LED-CHL-45 - one solid, one with hole	N/A	
LED-CHL-45-1200-MC	(2) Additional mounting clips for LED-CHL-45-1200	N/A	

WIDE

LED-CHL-W	Wide format extruded channel. Includes snap-on frosted lens with mounting clips and screws.	4'	
LED-CHL-W-6	Wide format extruded channel. Includes snap-on frosted lens with mounting clips and screws.	6'	
LED-CHL-W-AMC	(2) Adjustable mounting brackets for LED-CHL-W	N/A	
LED-CHL-W-EC	(2) End caps for LED-CHL-W - one solid, one with hole.	N/A	
LED-CHL-W-MC	(2) Additional mounting clips for LED-CHL-W	N/A	

MUD IN - STANDARD

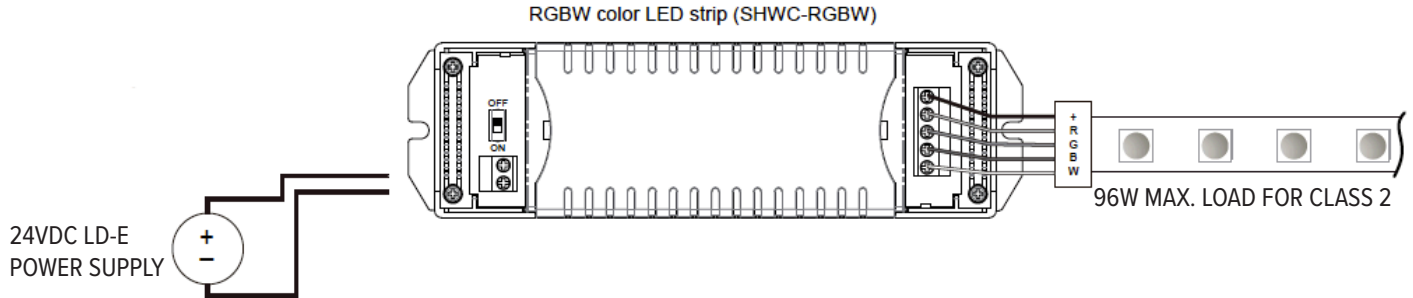
Catalog No.	Description	Length	Dimensions
LED-CHL-MI-ST6	Standard extruded aluminum mud-in channel. Includes snap-on frosted lens.	6'	
LED-CHL-MI-ST-EC	(2) End caps for LED-CHL-MI-ST6 one solid, one with hole.	N/A	

LTR-S Specification Series

24VDC RGBW Dry Location LED Tape Specification Sheet

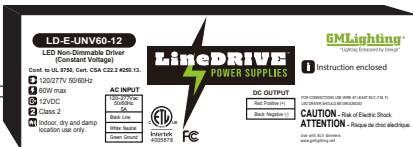
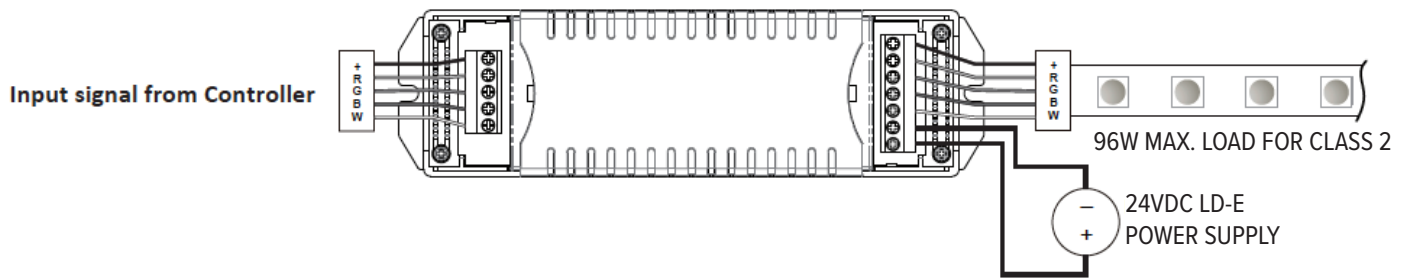


SHWC-RGBW LUXCONTROL WIFI CONTROLLER

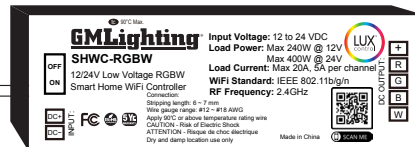


SHWC-RGBW and Repeater Wiring

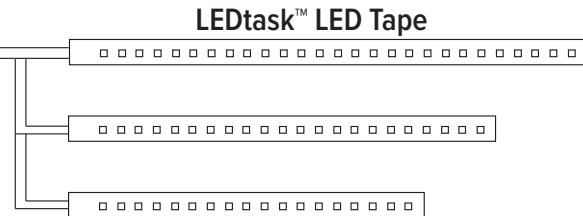
RGBW connection (4 channels)



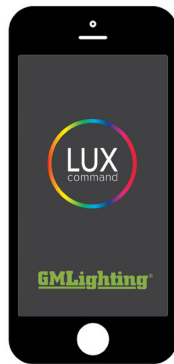
LineDRIVE™ Power Supply



LUXcontrol™ Controller



Expandable with universal power repeater (SHWC-RGBW-RPT) for larger projects



Remote WiFi Control

LUXcontrol™ App



Router Signal

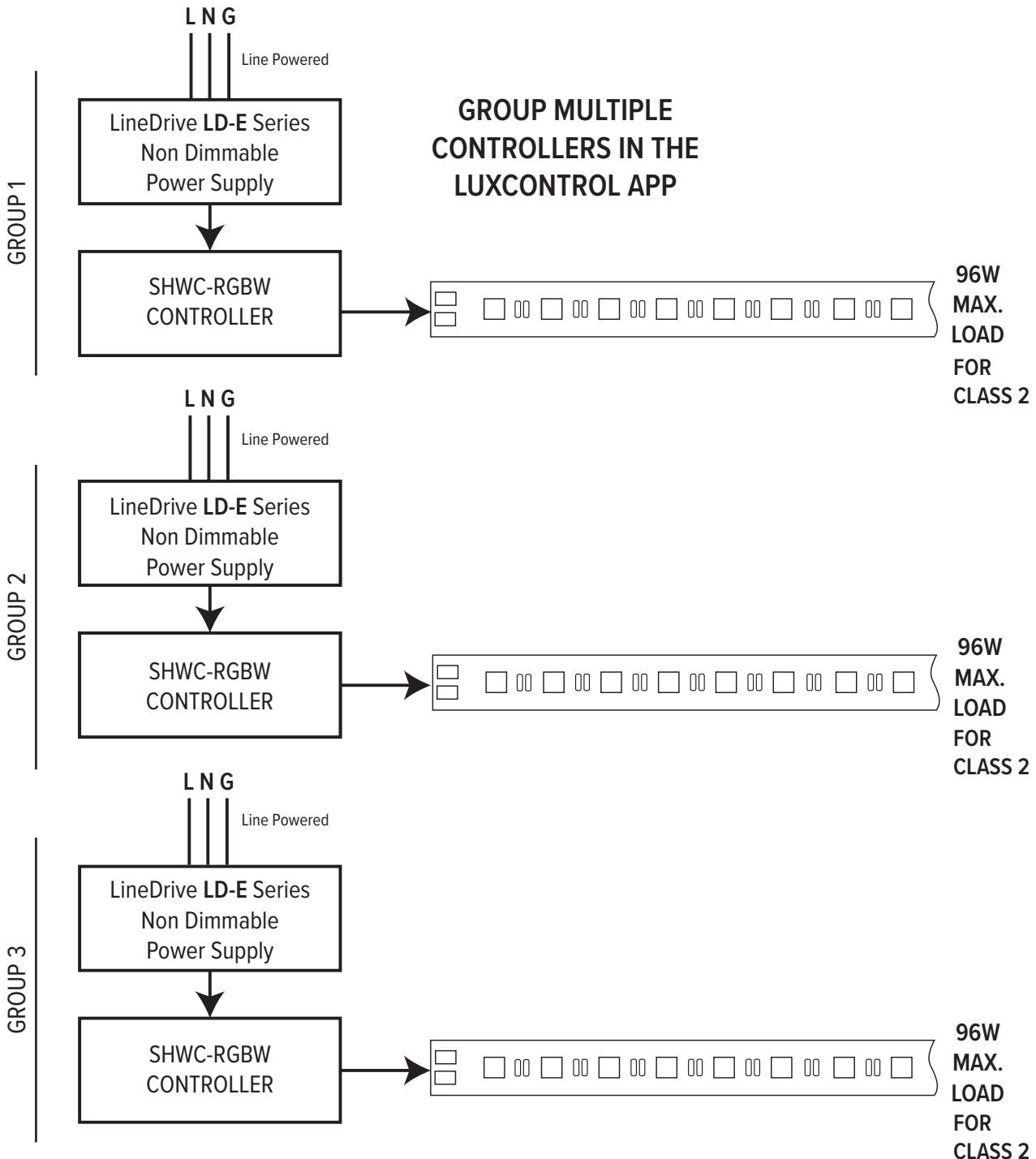
Note: For use with LD-E (non-dimmable) or LD-ED (dimmable) power supply only. Not compatible with LD-MD (magnetic) power supply.

LTR-S Specification Series

24VDC RGBW Dry Location LED Tape Specification Sheet



SHWC-RGBW LUXCONTROL WIFI CONTROLLER WIRING DIAGRAM

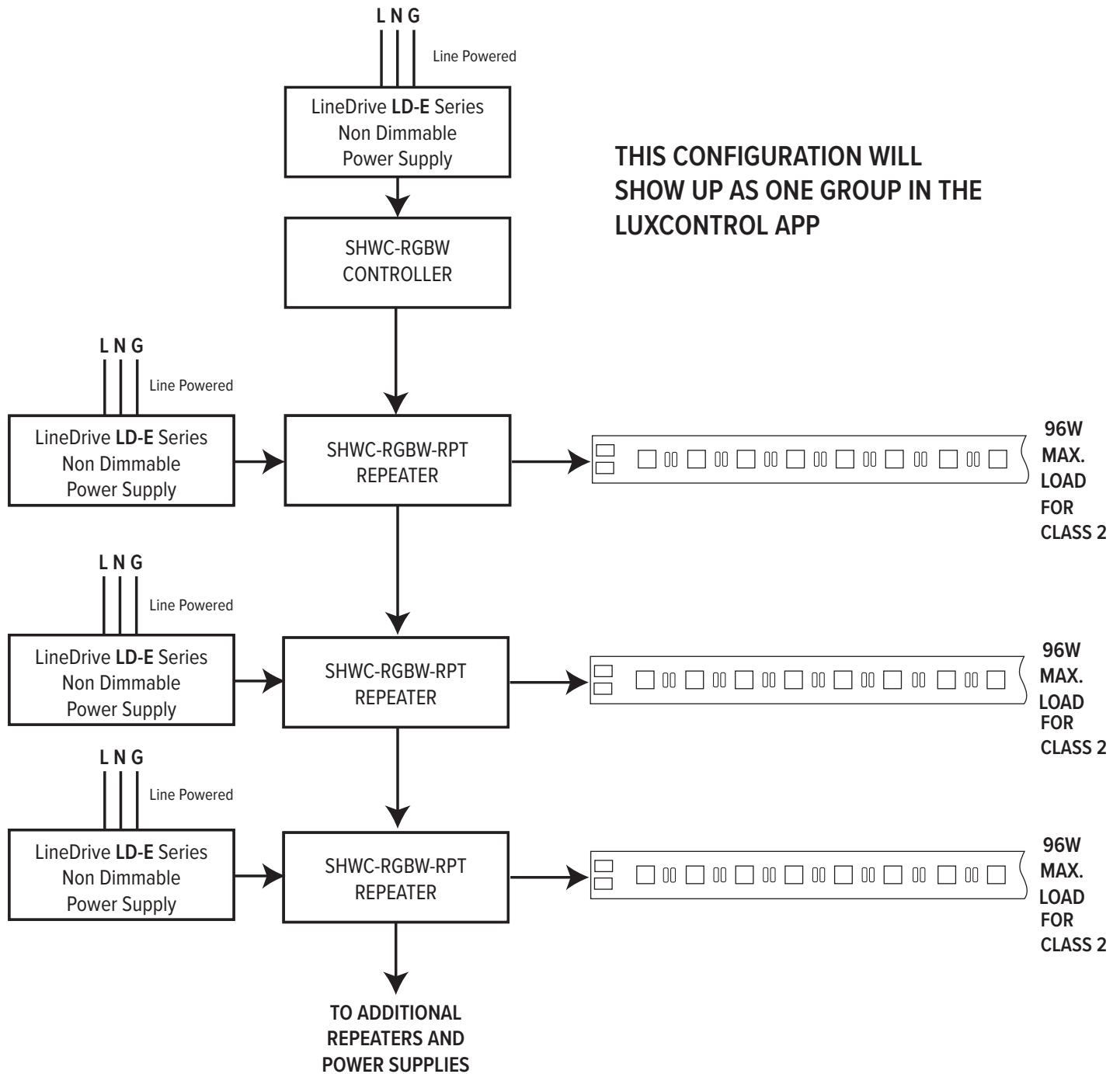


LTR-S Specification Series

24VDC RGBW Dry Location LED Tape Specification Sheet



SHWC-RGBW LUXCONTROL WIFI CONTROLLER WITH POWER REPEATER WIRING DIAGRAM

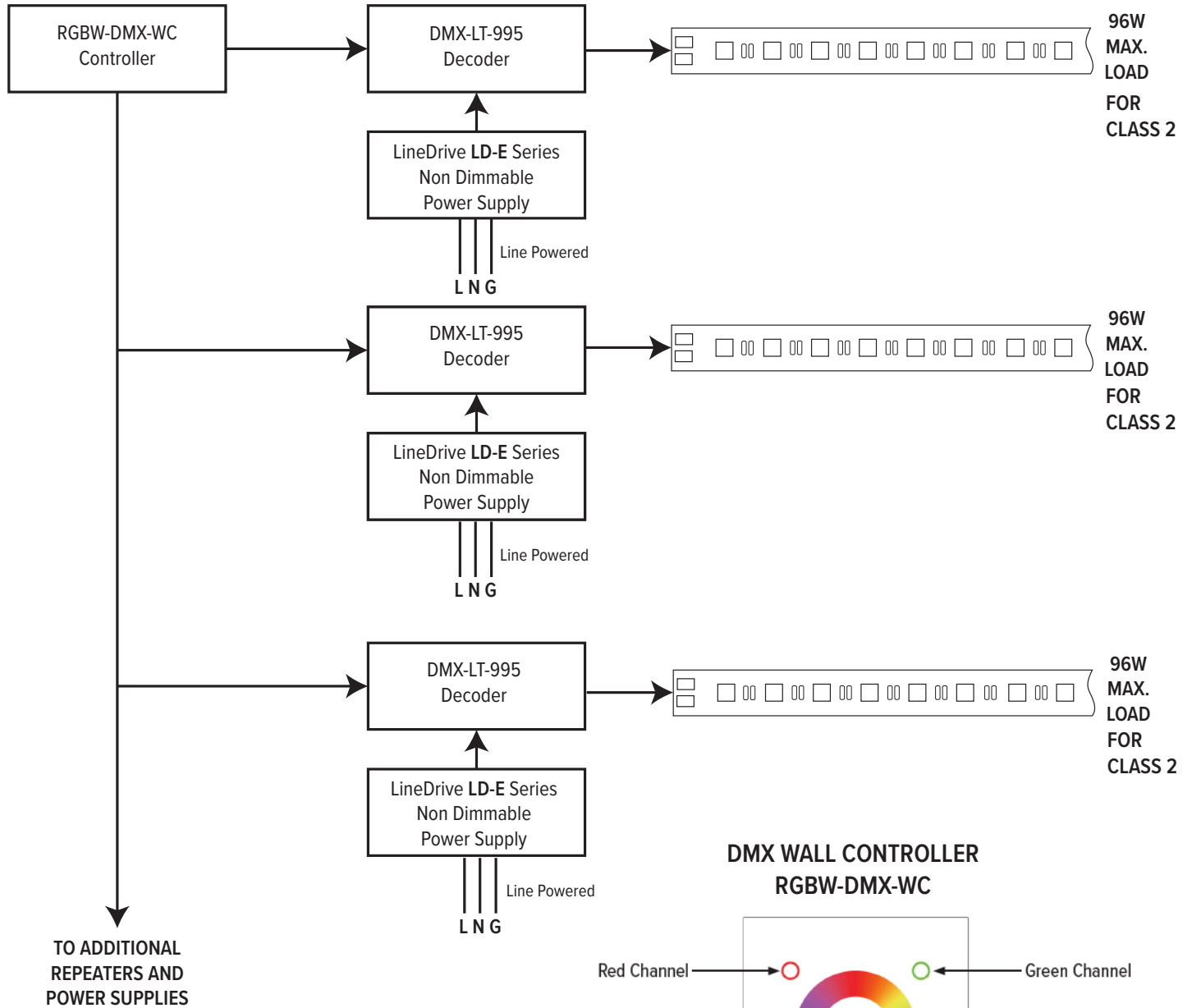


LTR-S Specification Series

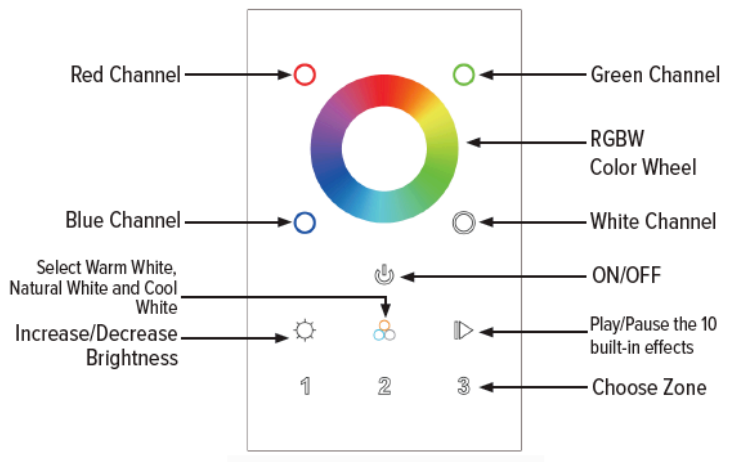
24VDC RGBW Dry Location LED Tape Specification Sheet



RGBW-DMX-WC DMX WALL CONTROLLER WIRING DIAGRAM



DMX WALL CONTROLLER RGBW-DMX-WC



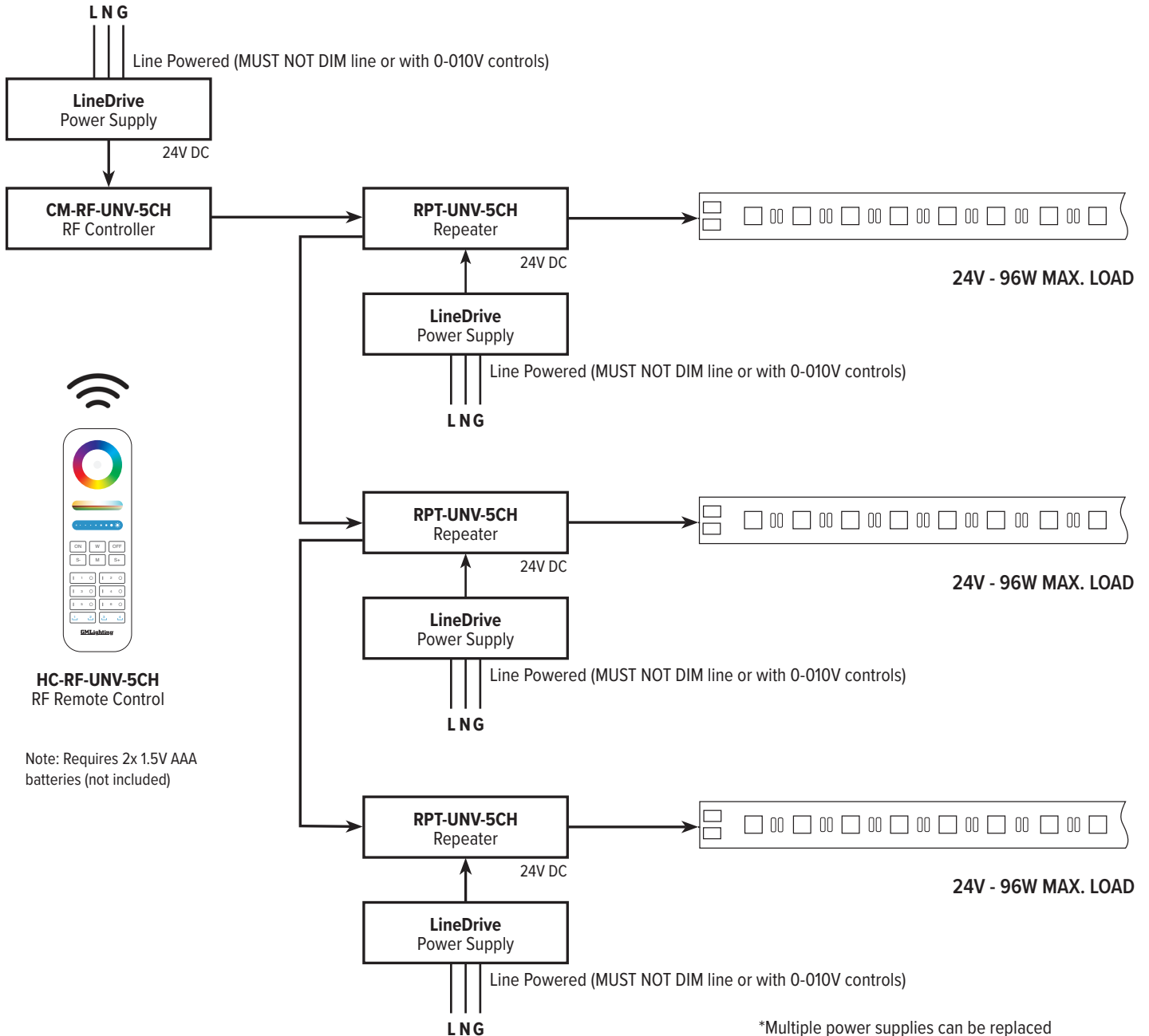
LTR-S Specification Series

24VDC RGBW Dry Location LED Tape Specification Sheet



RF CONTROLLER

Incoming power for (L N G) options can be 120V or 277V.
 Check power supply for proper input voltage and output power required.
 Power Supply output voltage must match LED operating voltage. (24VDC)
 Power supply used **MUST NOT BE DIMMED** at the input to properly power the controls.
 See Controller instructions for pairing and wiring details.



HC-RF-UNV-5CH
RF Remote Control

Note: Requires 2x 1.5V AAA
batteries (not included)

*Multiple power supplies can be replaced
with a single multi-output power supply.

Example: (3) **LD-E-UNV96-24** can be
replaced by (1) **LD-E-UNV300-24**

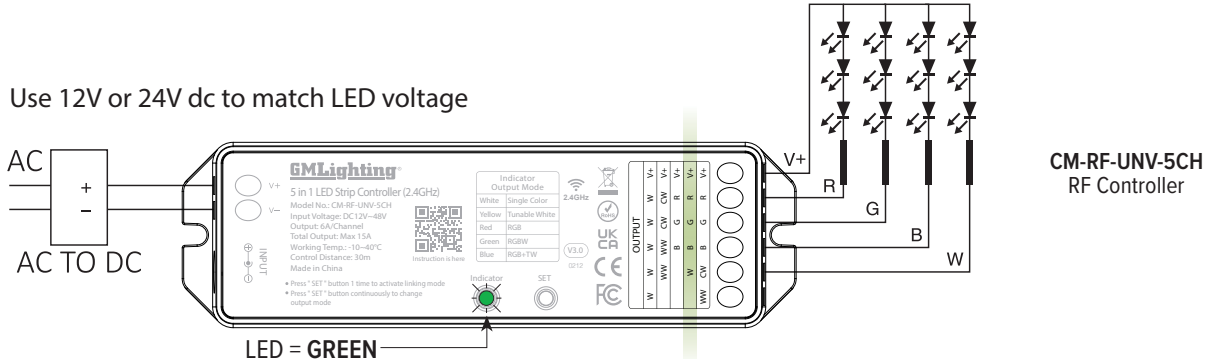
LTR-S Specification Series

24VDC RGBW Dry Location LED Tape Specification Sheet

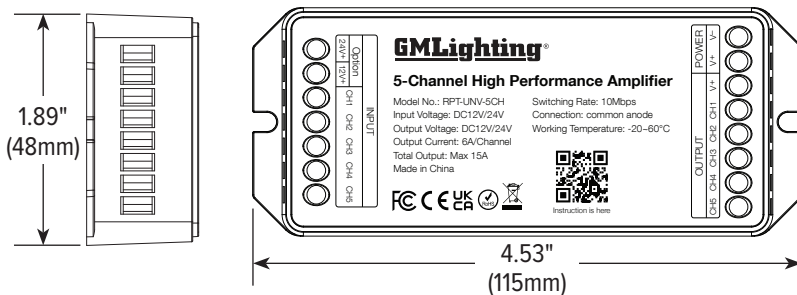
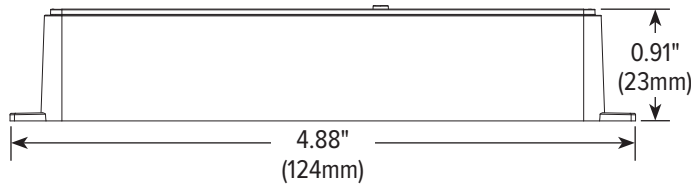
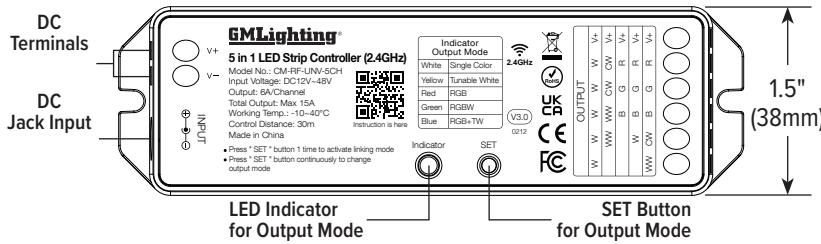


RF REMOTE CONTROLLER AND REPEATER

Use 12V or 24V dc to match LED voltage



DIMENSIONS



RPT-UNV-5CH Repeater Amplifier



LTR-S Specification Series

24VDC RGBW Dry Location LED Tape Specification Sheet



RF HAND HELD REMOTE FEATURES AND DIMENSIONS

**RF Remote Control
HC-RF-UNV-5CH
with Built-In Effects**

