

# LTR-P Professional Series

## Wet Location, 24VDC 1.5W / 3.0W / 5.8W LED Tape Specification Sheet



Project Name	Type
--------------	------

Catalog #	Date
-----------	------

### PRODUCT OVERVIEW

GM's Professional Outdoor Series Flexible LED Tape combines style and technology with reliability for wet location. Designed for professional installations that demand a high level of quality, the LTR-P Series boasts a wide array of key features and is available in 16'-4" (5M), 98'-6" (30M) reels or custom cuts. Do not submerge in water.

### FEATURES

- 24VDC
- 2400K, 2700K, 3000K, 3500K, 4000K and 5000K as well as Amber, Red, Green, Blue color temps
- Remote control with GM's LUXcontrol™ App and controllers (requires NEMA box - by others)
- LM80 / IP65
- 120 LEDs per meter
- Cuttable every 2"
- Wet location
- Optical clear UV protected silicone sheath
- Premium diodes
- 120° viewing angle
- Dimmable
- Maximum run on a given lead is 60' (1.5W), 32'-8" (3.0W), 16'-4" (5.8W)



### SPECIFICATIONS

#### ELECTRICAL

- 24V
- 1.5W, 3W and 5.8 watts per foot

#### OPTICS

- 90+ CRI

#### OPERATING TEMP

- -4°F to 122°F
- For proper thermal management, we recommend to mount this product in a channel

#### CERTIFICATION

- UL
- May comply with Title 24 with select power supplies
- Class 2
- Closet Rated. Compliant with NFPA 70, NEC section 410.16 (A)(3) and 410.16 (C)(5), excluding colors -AM, -BL, -RD, -GR and LTR-P-WP-24V-1.5W

#### WARRANTY

- 5-year warranty when paired with GM power supply

Note: Do not install in an application that is not easily accessed for service. Our warranty covers product only and does not cover any labor or incidental charges related to service or warranty.

Install Sheet



### ORDERING INFORMATION

Example: LTR-P-WP-24V-3W-24K-16

Model	Series	Location	Voltage	Wattage	Color Temp	Reel Length
LTR	P	WP	24V	1.5W	24K	16
					27K	
				3W	30K	100
					35K	
					40K	
5.8W	50K	*FT				
LTR	P	WP	24V	1.5W	AM	100
					RD	
					GR	
					BL	

Reel Length: 16 = 16'-4"; 100=98'-6"

\* Custom cuts available, consult factory



# LTR-P Professional Series

## Wet Location, 24VDC 1.5W / 3.0W / 5.8W LED Tape Specification Sheet



Catalog No.	Length	Lumens	CRI	Color Temp.	Max. Run
LTR-P-WP-24V-1.5W-24K-16 /-100 /-FT	16'-4" / 5M or, 98'-6" / 30M or, CUSTOM CUT FEET-INCHES (CUTS MADE IN 2" INCREMENTS)	100	90+	2400K	60'
LTR-P-WP-24V-1.5W-27K-16 /-100 /-FT		105	90+	2700K	60'
LTR-P-WP-24V-1.5W-30K-16 /-100 /-FT		105	90+	3000K	60'
LTR-P-WP-24V-1.5W-35K-16 /-100 /-FT		110	90+	3500K	60'
LTR-P-WP-24V-1.5W-40K-16 /-100 /-FT		123	90+	4000K	60'
LTR-P-WP-24V-1.5W-50K-16 /-100 /-FT		119	90+	5000K	60'
LTR-P-WP-24V-1.5W-AM-100 / -FT	98'-6" / 30M or, CUSTOM CUT FEET-INCHES (CUTS MADE IN 2" INCREMENTS)	N/A	N/A	Amber	60'
LTR-P-WP-24V-1.5W-RD-100 / -FT		N/A	N/A	Red	60'
LTR-P-WP-24V-1.5W-GR-100 / -FT		N/A	N/A	Green	60'
LTR-P-WP-24V-1.5W-BL-100 / -FT		N/A	N/A	Blue	60'
LTR-P-WP-24V-3.0W-24K-16 /-100 /-FT	16'-4" / 5M or, 98'-6" / 30M or, CUSTOM CUT FEET-INCHES (CUTS MADE IN 2" INCREMENTS)	204	90+	2400K	32'-8"
LTR-P-WP-24V-3.0W-27K-16 /-100 /-FT		206	90+	2700K	32'-8"
LTR-P-WP-24V-3.0W-30K-16 /-100 /-FT		217	90+	3000K	32'-8"
LTR-P-WP-24V-3.0W-35K-16 /-100 /-FT		219	90+	3500K	32'-8"
LTR-P-WP-24V-3.0W-40K-16 /-100 /-FT		241	90+	4000K	32'-8"
LTR-P-WP-24V-3.0W-50K-16 /-100 /-FT		255	90+	5000K	32'-8"
LTR-P-WP-24V-5.8W-24K-16 /-100 /-FT	16'-4" / 5M or, 98'-6" / 30M or, CUSTOM CUT FEET-INCHES (CUTS MADE IN 2" INCREMENTS)	355	90+	2400K	16'-4"
LTR-P-WP-24V-5.8W-27K-16 /-100 /-FT		361	90+	2700K	16'-4"
LTR-P-WP-24V-5.8W-30K-16 /-100 /-FT		388	90+	3000K	16'-4"
LTR-P-WP-24V-5.8W-35K-16 /-100 /-FT		415	90+	3500K	16'-4"
LTR-P-WP-24V-5.8W-40K-16 /-100 /-FT		444	90+	4000K	16'-4"
LTR-P-WP-24V-5.8W-50K-16 /-100 /-FT		475	90+	5000K	16'-4"

Includes (20) silicon mounting clips and screws, (2) silicon end caps.  
Kelvin temperature (color) ±100K.

**DO NOT SUBMERGE DIRECTLY IN WATER.**  
WE RECOMMEND A 25% TO 80% LOAD FOR OPTIMAL PERFORMANCE.  
SEE WEBSITE FOR COMPLETE LIST OF POWER SUPPLIES AND COMPATIBLE DIMMERS.

### ACCESSORIES

Model	Description
LTR-P-WP-TPC-12	Tape to power supply wet location connector
LTR-P-WP-TTC-3	3" tape to tape wet location connector
LTR-P-WP-TTC-6	6" tape to tape wet location connector
LTR-P-WP-TTC-12	12" tape to tape wet location connector
LTR-P-WP-TTC-24	24" tape to tape wet location connector
LTR-P-WP-EC	End cap for wet location tape

### Your LED Tape Specification Checklist:

1. Select Tape
2. Select Connectors
3. Select Channels
4. Select Controllers
5. Select Power Supplies

# LTR-P Professional Series

## Wet Location, 24VDC 1.5W / 3.0W / 5.8W LED Tape Specification Sheet

### COMPATIBLE CONTROLLERS

Model	Description
SHWC	LUXcontrol Smart 2.4 GHz WiFi Controller, Standard 12V/24V Low Voltage
SHWD	LUXcontrol Smart 2.4 GHz WiFi Dimmer, Standard 12V/24V Low Voltage
SWDD60W24V	SwitchLD All-in-One Dimmer and Driver, 60W, 24VDC
SWDD96W24V	SwitchLD All-in-One Dimmer and Driver, 96W, 24VDC
HC-RF-UNV-5CH	Universal 1-5 Channel RF Remote Control
CM-RF-UNV-5CH	Universal 1-5 Channel Control Module
RPT-UNV-5CH	Universal 1-5 Channel Repeater Amplifier

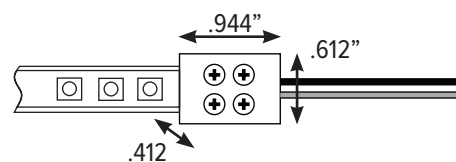
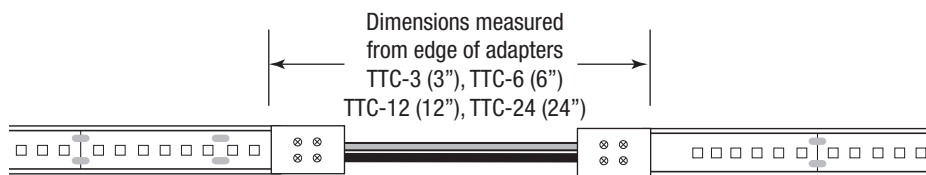
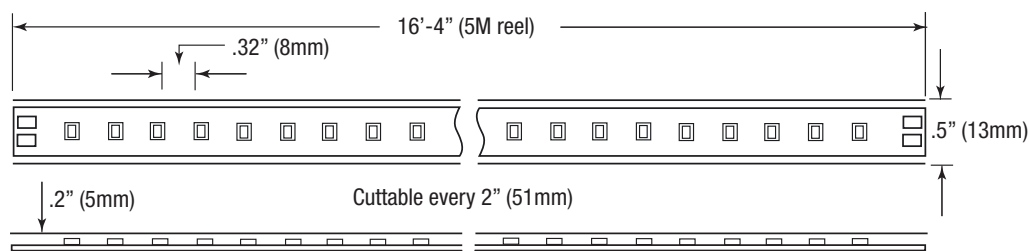
Note: For wet location applications, use NEMA box (by others)

### RECOMMENDED DRIVERS

Catalog No.	Description	Watts	Specification Sheet
LD-XD-UNV	LineDrive Electronic Multi-Dimmable Power Supply, 12VDC/24VDC	20W, 40W, 60W, 96W, 180W, 200W, 300W	<a href="#">View Spec Sheet</a>
LD-MD-UNV	LineDrive Magnetic Dimmable Power Supply, 12VDC/24VDC	30W, 60W, 96W, 150W, 200W, 300W	<a href="#">View Spec Sheet</a>
LD-EDM	LineDrive Electronic Dimmable MINI Power Supply, 12VDC/24VDC	60W	<a href="#">View Spec Sheet</a>
LTP	Cord and Plug Power Supply, 12VDC/24VDC	25W, 48W, 60W, 90W	<a href="#">View Spec Sheet</a>
PSD	Electronic Dimmable Power Supply, 12VDC/24VDC	15W, 24W, 60W, 90W	<a href="#">View Spec Sheet</a>

NOTE: Please see our website for updated power supply specifications and information.

### DIMENSION



LTR-P-WP  
Wet Location  
Connector

# LTR-P Professional Series

## Wet Location, 24VDC 1.5W / 3.0W / 5.8W LED Tape Specification Sheet



### COMPATIBLE CHANNELS - FIT CONNECTORS ON PG. 1

#### EXTRA DEEP

Catalog No.	Description	Length	Dimensions
LED-CHL-XD	Extra deep format extruded channel. Includes snap-on frosted lens with mounting clips and screws.	4'	
LED-CHL-XD-6	Extra deep format extruded channel. Includes snap-on frosted lens with mounting clips and screws.	6'	
LED-CHL-XD-AMC	(2) Adjustable mounting brackets for LED-CHL-XD	N/A	
LED-CHL-XD-EC	(2) End caps for LED-CHL-XD. One solid, one with hole.	N/A	
LED-CHL-XD-MC	(2) Mounting clips and screws for LED-CHL-XD	N/A	

#### EXTRA DEEP FLANGED

LED-CHL-XD-F	Extra deep format extruded channel with flange. Includes snap-on frosted lens with mounting clips and screws.	4'	
LED-CHL-XD-F-6	Extra deep format extruded channel with flange. Includes snap-on frosted lens with mounting clips and screws.	6'	
LED-CHL-XD-F-DC	(2) Drywall mounting brackets for LED-CHL-XD-F	N/A	
LED-CHL-XD-F-EC	(2) End caps for LED-CHL-XD-F. One solid, one with hole.	N/A	

#### 45° LARGE ANGLE MOUNT

LED-CHL-45-1200	Extruded angled (45°) channel. Includes snap-on frosted lens with mounting clips and screws.	4'	
LED-CHL-45-1200-EC	(2) End caps for LED-CHL-45 - one solid, one with hole	N/A	
LED-CHL-45-1200-MC	(2) Additional mounting clips for LED-CHL-45-1200	N/A	

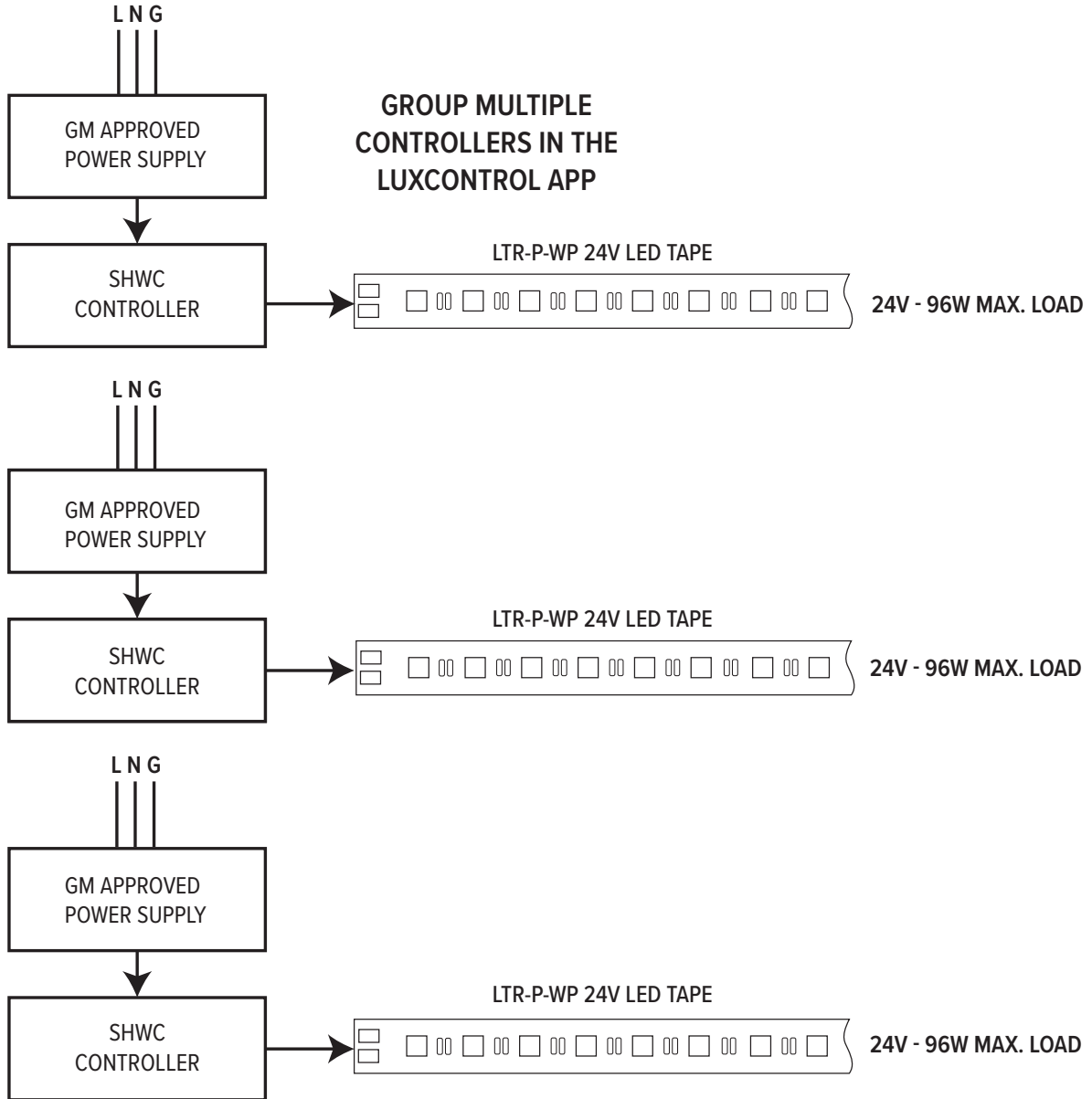
# LTR-P Professional Series

## Wet Location, 24VDC 1.5W / 3.0W / 5.8W LED Tape Specification Sheet



### SHWC LUXCONTROL WIFI CONTROLLER

NOTE: Power supply **MUST NOT BE DIMMED**  
at the input to properly power the controls.



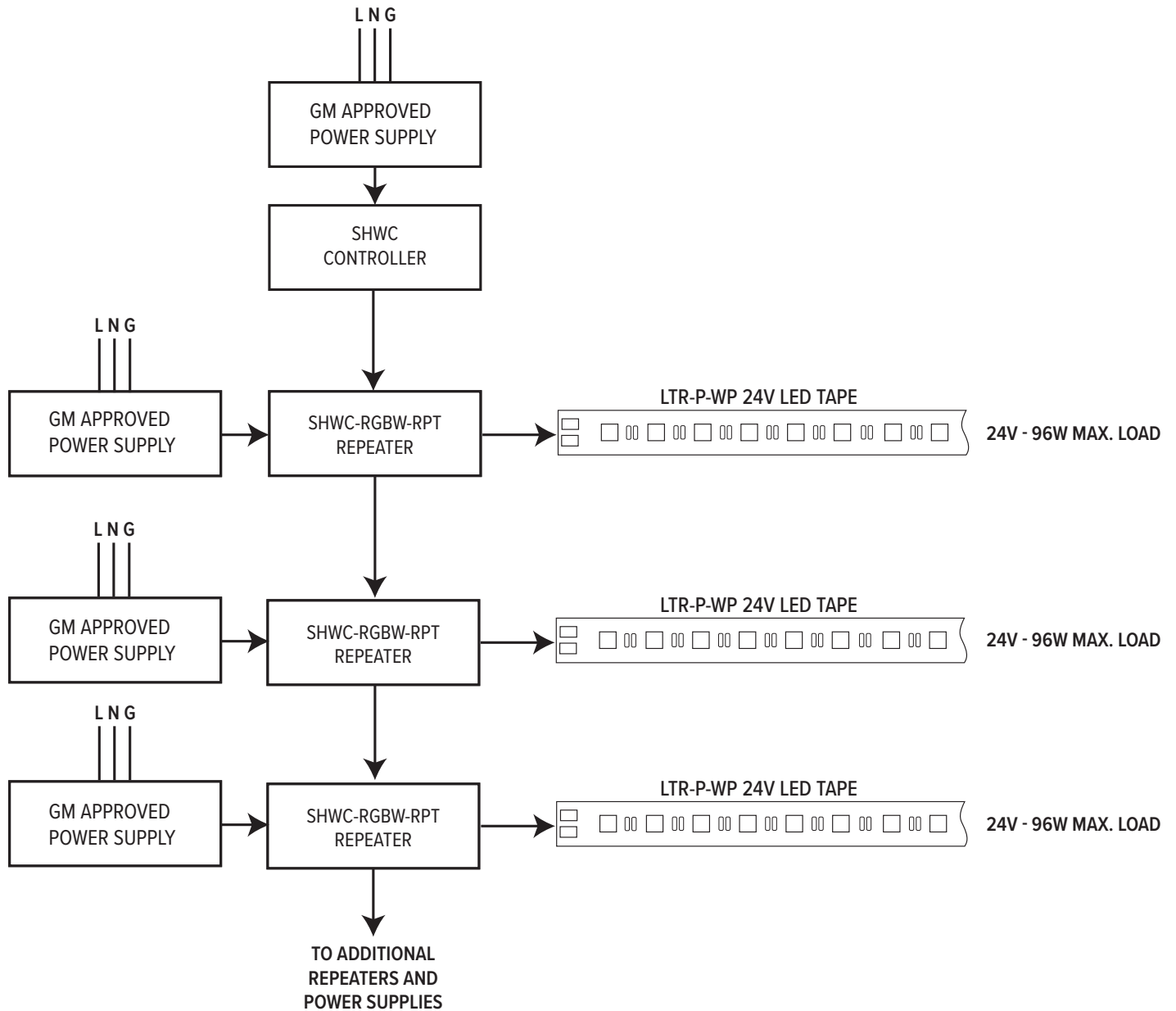
# LTR-P Professional Series

## Wet Location, 24VDC 1.5W / 3.0W / 5.8W LED Tape Specification Sheet



### SHWC LUXCONTROL WIFI CONTROLLER WITH POWER REPEATER

NOTE: Power supply **MUST NOT BE DIMMED**  
at the input to properly power the controls.

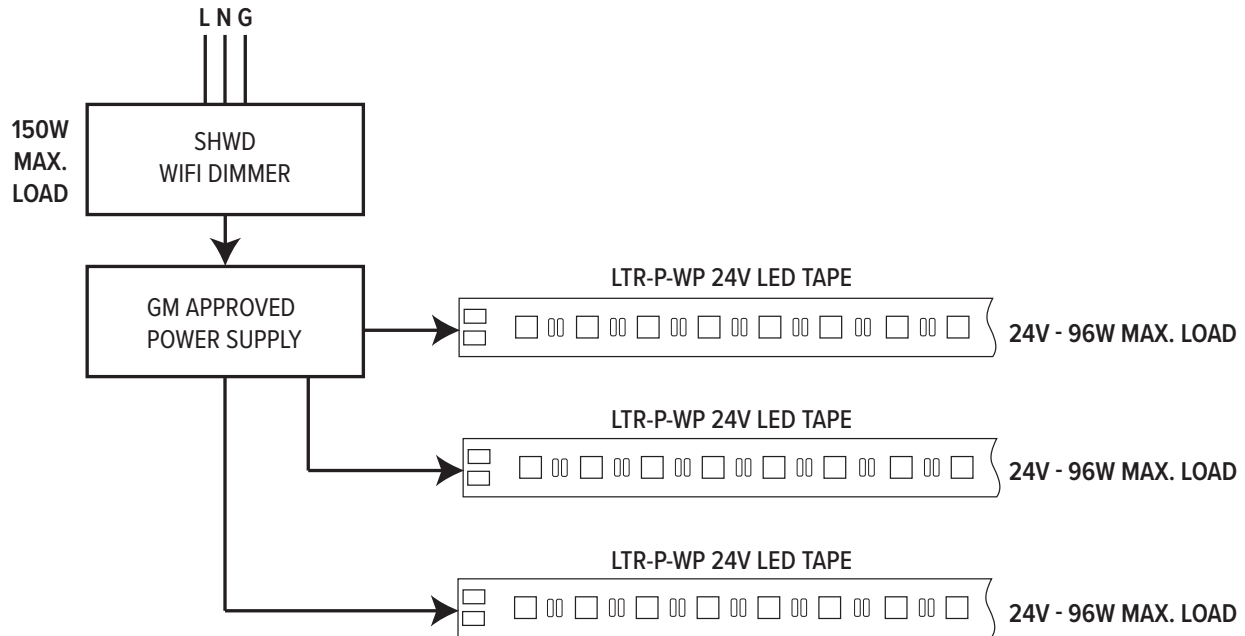


# LTR-P Professional Series

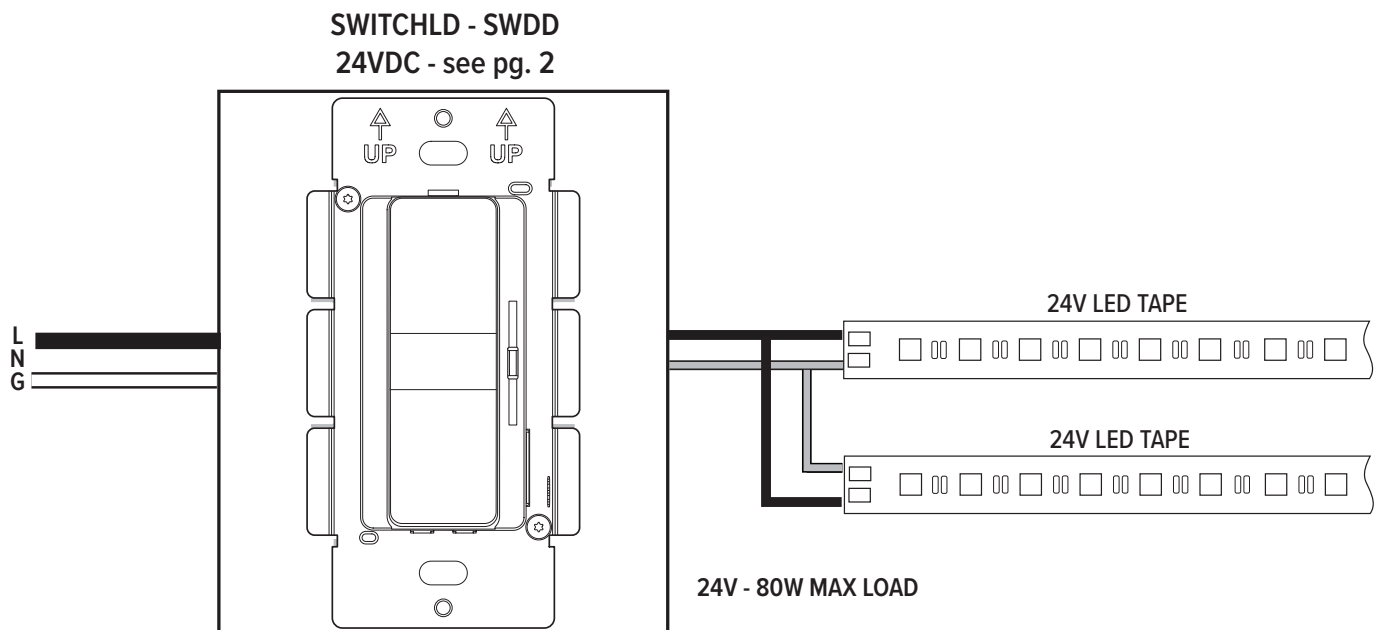
Wet Location, 24VDC 1.5W / 3.0W / 5.8W  
LED Tape Specification Sheet



## SHWD LUXCONTROL WIFI DIMMER



## SWITCHLD SWD DRIVER AND DIMMER



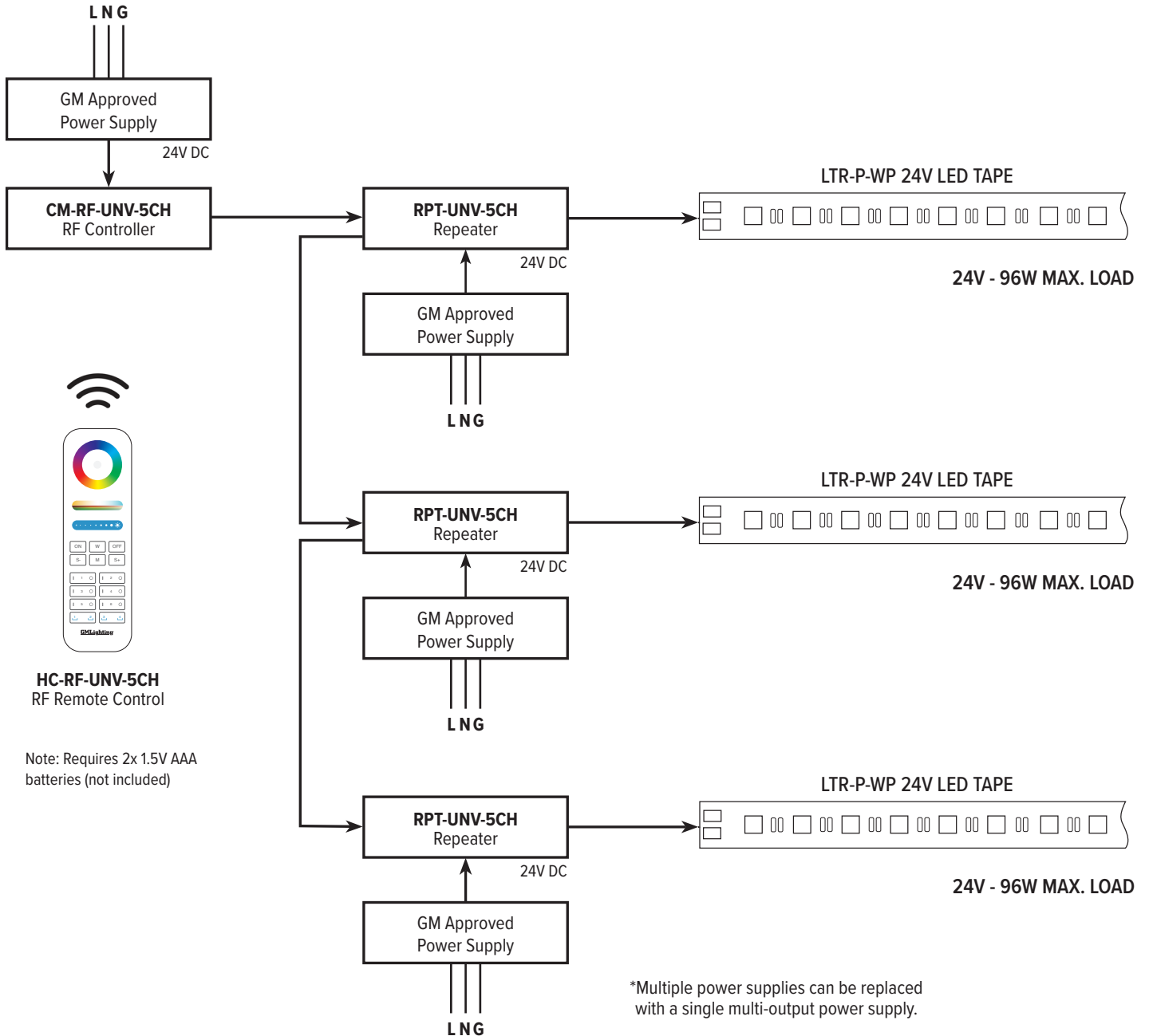
# LTR-P Professional Series

## Wet Location, 24VDC 1.5W / 3.0W / 5.8W LED Tape Specification Sheet



### RF CONTROLLER

Incoming power for (L N G) options can be 120V or 277V.  
 Check power supply for proper input voltage and output power required.  
 Power Supply output voltage must match LED operating voltage. (24VDC)  
 Power supply used **MUST NOT BE DIMMED** at the input to properly power the controls.  
 See Controller instructions for pairing and wiring details.



**HC-RF-UNV-5CH**  
RF Remote Control

Note: Requires 2x 1.5V AAA  
batteries (not included)

\*Multiple power supplies can be replaced  
with a single multi-output power supply.

Example: (3) **LD-XD-UNV96-24** can be  
replaced by (1) **LD-XD-UNV300-24**

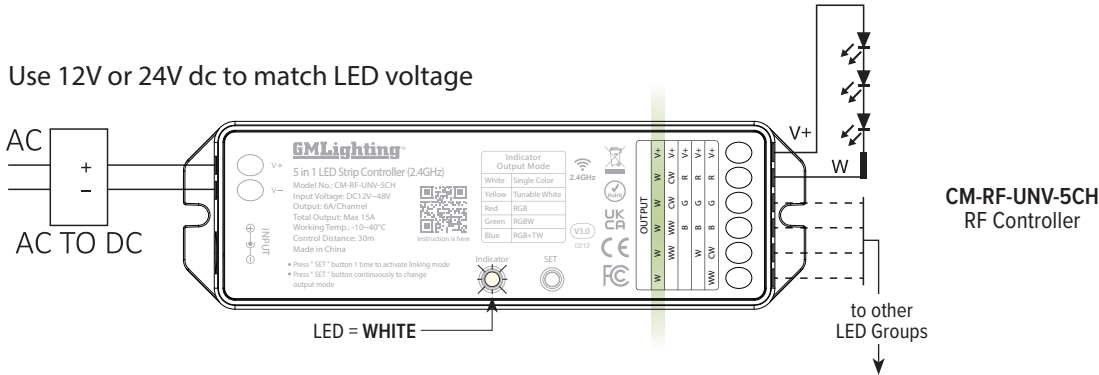
# LTR-P Professional Series

## Wet Location, 24VDC 1.5W / 3.0W / 5.8W LED Tape Specification Sheet

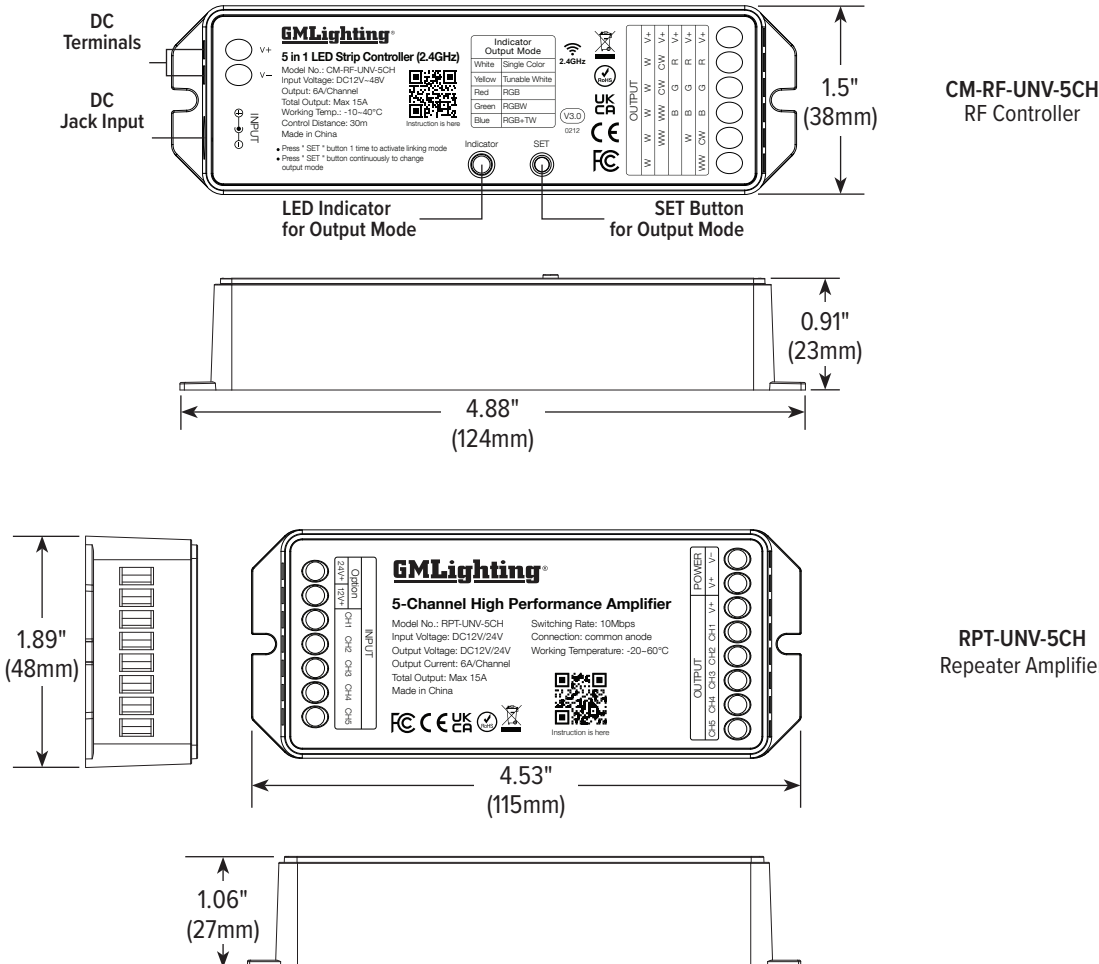


### RF REMOTE CONTROLLER AND REPEATER

Use 12V or 24V dc to match LED voltage



### DIMENSIONS



# LTR-P Professional Series

Wet Location, 24VDC 1.5W / 3.0W / 5.8W  
LED Tape Specification Sheet



## RF HAND HELD REMOTE FEATURES AND DIMENSIONS

RF Remote Control  
HC-RF-UNV-5CH  
with Built-In Effects

