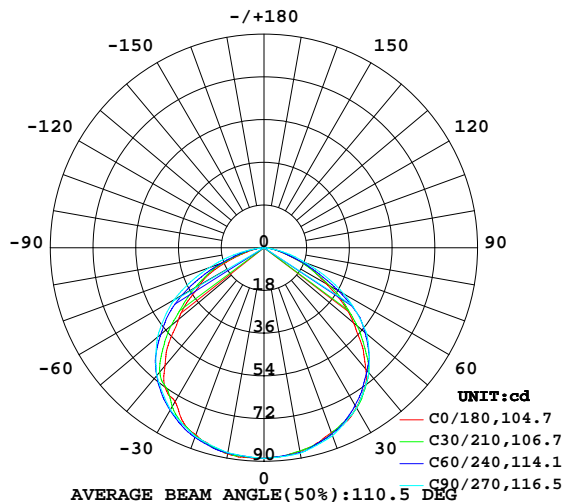


LUMINAIRE PHOTOMETRIC TEST REPORT

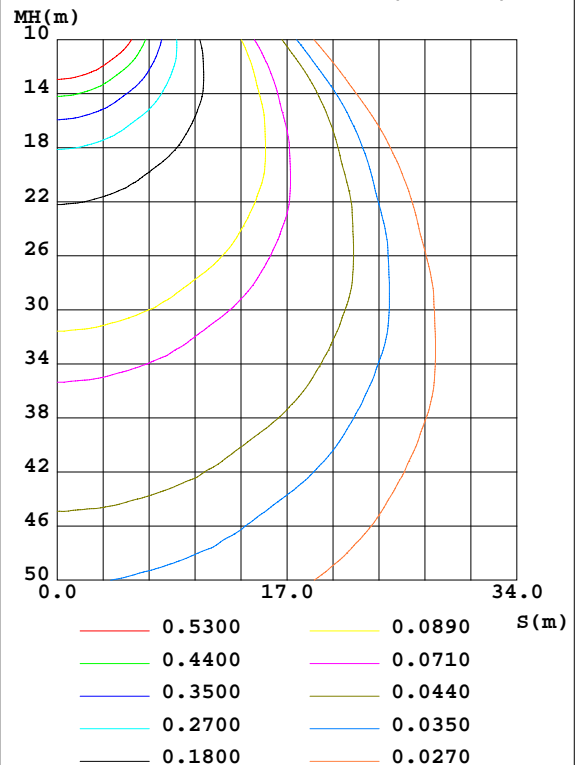
| | | | | | |
|--|--|----------------------|--|------------------|--|
| Test:U:119.76V I:0.0590A P:5.9887W PF:0.8478 Freq:59.98Hz Lamp Flux:241.244x1 lm | | | | | |
| NAME: 3535RGB+2835NW-120D-120V | | TYPE:LED Strip LIGHT | | WEIGHT:1 | |
| SPEC.:609.6*20MM | | DIM.: 609.6*20MM | | SERIAL No.:1 | |
| MFR.: ESTAR | | SUR.:609.6*20MM | | Shielding Angle: | |

| DATA OF LAMP | | PHOTOMETRIC DATA Eff: 40.28 lm/W | | | |
|------------------|---------|----------------------------------|--------|-------------------|----------|
| MODEL | RGB+NW | I _{max} (cd) | 88.82 | S/MH(C0/180) | 1.28 |
| NOMINAL POWER(W) | 6 | LOR(%) | 100.0 | S/MH(C90/270) | 1.32 |
| RATED VOLTAGE(V) | 120 | TOTAL FLUX(lm) | 241.24 | η UP,DN(C0-180) | 0.0,49.1 |
| NOMINAL FLUX(lm) | 241.244 | CIE CLASS | DIRECT | η UP,DN(C180-360) | 0.0,50.9 |
| LAMPS INSIDE | 1 | η up(%) | 0.0 | CIBSE SHR NOM | 1.25 |
| TEST VOLTAGE(V) | 120 | η down(%) | 100.0 | CIBSE SHR MAX | 1.35 |

LUMINOUS INTENSITY DISTRIBUTION DIAGRAM



C0 PLANE ISOLUX DIAGRAM (UNIT:lx)



H(β) Range:-90 - 90DEG
 H(β) Interval: 0.2DEG
 Test Speed: MEDIUM
 Temperature:25.3DEG
 Operators:HW
 Test Date:02 September 2020

V(B) Range:-80 - 80DEG
 V(B) Interval: 5.0DEG
 Test System:EVERFINE GO-2000A_V1 SYSTEM V2.00.421
 Humidity:65.0%
 Test Distance:9.900m [K=1.0000]
 Remarks:

ZONAL FLUX DIAGRAM

ZONAL FLUX DIAGRAM:

| γ | C0 | C45 | C90 | C135 | C180 | C225 | C270 | C315 | γ | Φ zone | Φ total | %lum, lamp |
|----------|-----------------------|-------|-------|-------|--------|-------|-------|-------|----------|-------------|--------------|------------|
| 10 | 87.04 | 87.13 | 87.94 | 88.32 | 88.17 | 88.14 | 87.67 | 87.07 | 0- 10 | 8.407 | 8.407 | 3.48,3.48 |
| 20 | 82.91 | 83.32 | 84.32 | 84.43 | 83.96 | 84.53 | 84.61 | 83.27 | 10- 20 | 24.31 | 32.72 | 13.6,13.6 |
| 30 | 77.82 | 77.13 | 78.00 | 78.13 | 74.92 | 78.94 | 78.86 | 77.68 | 20- 30 | 37.42 | 70.14 | 29.1,29.1 |
| 40 | 66.77 | 68.62 | 68.81 | 66.25 | 64.95 | 67.59 | 70.25 | 69.40 | 30- 40 | 45.87 | 116.0 | 48.1,48.1 |
| 50 | 49.35 | 54.32 | 56.54 | 53.56 | 47.05 | 56.17 | 58.56 | 55.77 | 40- 50 | 47.13 | 163.1 | 67.6,67.6 |
| 60 | 30.35 | 34.06 | 38.85 | 31.70 | 31.19 | 34.94 | 43.77 | 35.67 | 50- 60 | 39.73 | 202.9 | 84.1,84.1 |
| 70 | 14.82 | 14.78 | 18.46 | 15.25 | 15.44 | 18.45 | 24.39 | 16.55 | 60- 70 | 25.78 | 228.7 | 94.8,94.8 |
| 80 | 4.437 | 4.417 | 4.932 | 4.217 | 4.232 | 5.702 | 7.219 | 5.303 | 70- 80 | 10.83 | 239.5 | 99.3,99.3 |
| 90 | 0.3102 | 0 | 0 | 0 | 0.2989 | 0 | 0 | 0 | 80- 90 | 1.762 | 241.2 | 100,100 |
| 100 | | | | | | | | | 90-100 | | | |
| 110 | | | | | | | | | 100-110 | | | |
| 120 | | | | | | | | | 110-120 | | | |
| 130 | | | | | | | | | 120-130 | | | |
| 140 | | | | | | | | | 130-140 | | | |
| 150 | | | | | | | | | 140-150 | | | |
| 160 | | | | | | | | | 150-160 | | | |
| 170 | | | | | | | | | 160-170 | | | |
| 180 | | | | | | | | | 170-180 | | | |
| DEG | LUMINOUS INTENSITY:cd | | | | | | | | | UNIT:lm | | |

Conical surface Flux(90deg): 139.99 lm

%lum = 58.0%

%lamp = 58.0%

Conical surface Flux(120deg): 202.87 lm

%lum = 84.1%

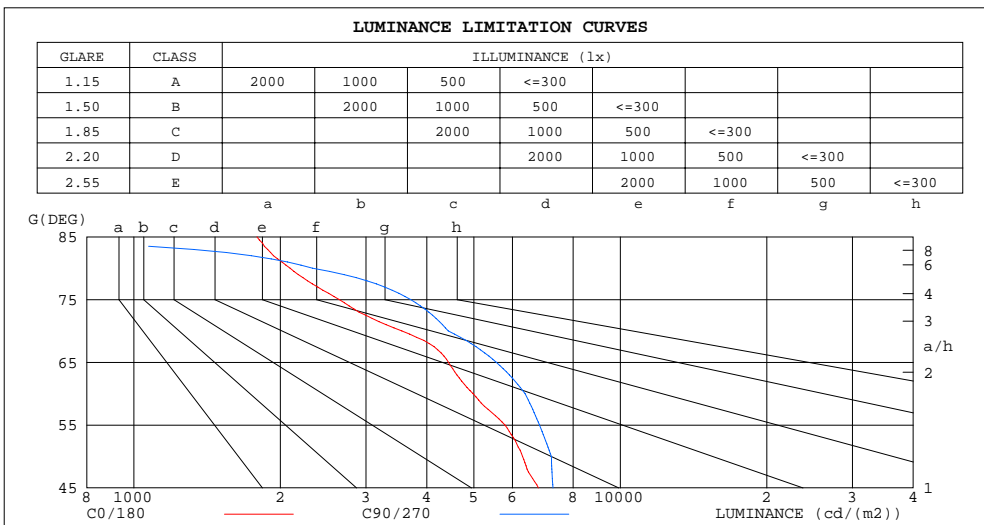
%lamp = 84.1%

H(β) Range:-90 - 90DEG
H(β) Interval: 0.2DEG
Test Speed: MEDIUM
Temperature:25.3DEG
Operators:HW
Test Date:02 September 2020

V(B) Range:-80 - 80DEG
V(B) Interval: 5.0DEG
Test System:EVERFINE GO-2000A_V1 SYSTEM V2.00.421
Humidity:65.0%
Test Distance:9.900m [K=1.0000]
Remarks:

LUMINANCE LIMITATION CURVES

| | | |
|--|----------------------|------------------|
| Test:U:119.76V I:0.0590A P:5.9887W PF:0.8478 Freq:59.98Hz Lamp Flux:241.244x1 lm | | |
| NAME: 3535RGB+2835NW-120D-120V | TYPE:LED Strip LIGHT | WEIGHT:1 |
| SPEC.:609.6*20MM | DIM.: 609.6*20MM | SERIAL No.:1 |
| MFR.: ESTAR | SUR.:609.6*20MM | Shielding Angle: |



| LUMINANCE cd/(m2) | | |
|-------------------|--------|---------|
| G(DEG) | C0/180 | C90/270 |
| 85 | 1790 | 0 |
| 80 | 2096 | 2330 |
| 75 | 2643 | 3707 |
| 70 | 3555 | 4427 |
| 65 | 4431 | 5561 |
| 60 | 4979 | 6372 |
| 55 | 5790 | 6820 |
| 50 | 6297 | 7215 |
| 45 | 6786 | 7270 |

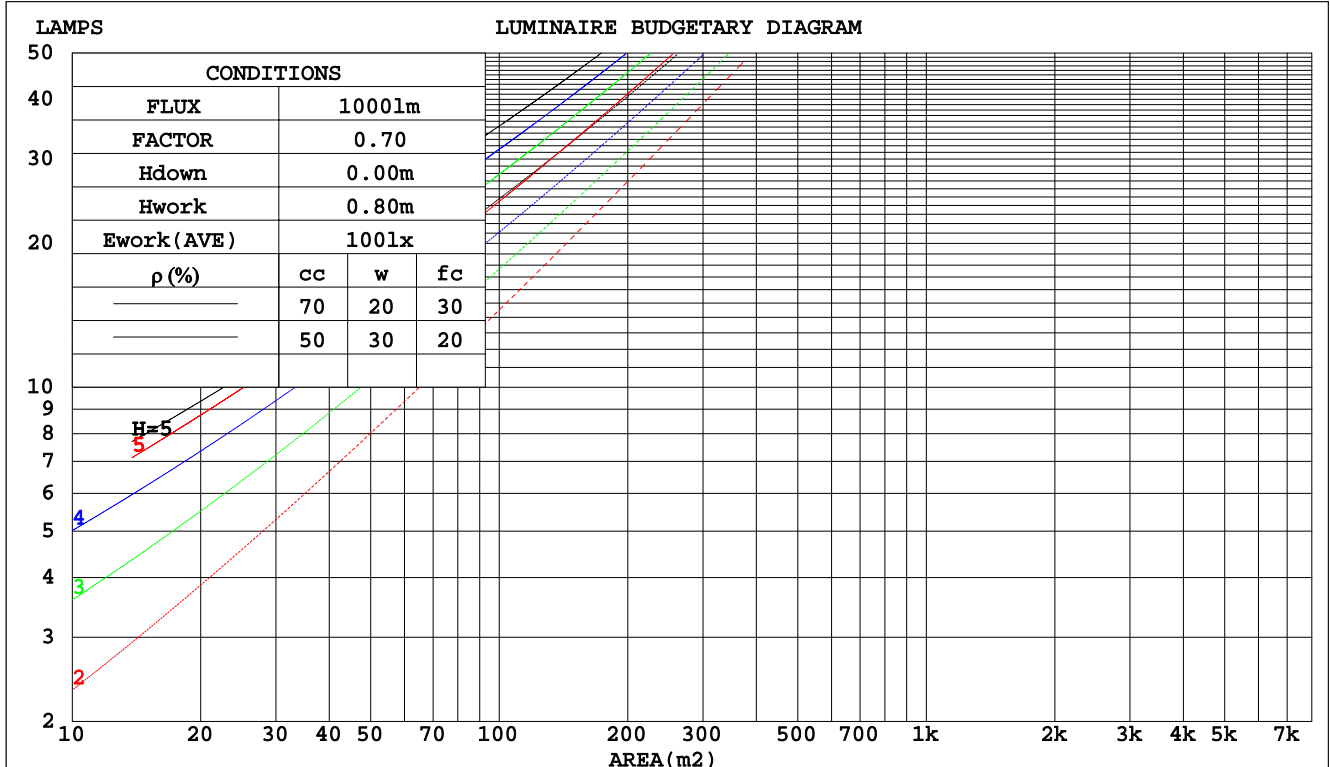
H(β) Range:-90 - 90DEG
H(β) Interval: 0.2DEG
Test Speed: MEDIUM
Temperature:25.3DEG
Operators:HW
Test Date:02 September 2020

V(B) Range:-80 - 80DEG
V(B) Interval: 5.0DEG
Test System:EVERFINE GO-2000A_V1 SYSTEM V2.00.421
Humidity:65.0%
Test Distance:9.900m [K=1.0000]
Remarks:

CU AND LUMINAIRE BUDGETARY ESTIMATE DIAGRAM

| | | |
|--|----------------------|------------------|
| Test:U:119.76V I:0.0590A P:5.9887W PF:0.8478 Freq:59.98Hz Lamp Flux:241.244x1 lm | | |
| NAME: 3535RGB+2835NW-120D-120V | TYPE:LED Strip LIGHT | WEIGHT:1 |
| SPEC.:609.6*20MM | DIM.: 609.6*20MM | SERIAL No.:1 |
| MFR.: ESTAR | SUR.:609.6*20MM | Shielding Angle: |

| pcc | 80% | | | 70% | | | 50% | | | 30% | | | 10% | | | 0 |
|------|-----------------------|------|------|------|------|------|---------------------------------|------|------|------|------|------|------|------|------|------|
| pw | 50% | 30% | 10% | 50% | 30% | 10% | 50% | 30% | 10% | 50% | 30% | 10% | 50% | 30% | 10% | 0 |
| pfc | 20% | | | 20% | | | 20% | | | 20% | | | 20% | | | 0 |
| RCR | RCR:Room Cavity Ratio | | | | | | Coefficients of Utilization(CU) | | | | | | | | | |
| 0.0 | 1.19 | 1.19 | 1.19 | 1.16 | 1.16 | 1.16 | 1.11 | 1.11 | 1.11 | 1.06 | 1.06 | 1.06 | 1.02 | 1.02 | 1.02 | 1.00 |
| 1.0 | 1.05 | 1.01 | .98 | 1.03 | .90 | .96 | .99 | .96 | .93 | .95 | .93 | .90 | .91 | .90 | .88 | .86 |
| 2.0 | .93 | .86 | .81 | .91 | .85 | .80 | .87 | .82 | .78 | .84 | .80 | .76 | .81 | .78 | .75 | .72 |
| 3.0 | .82 | .74 | .68 | .80 | .73 | .67 | .77 | .71 | .66 | .74 | .69 | .65 | .72 | .67 | .64 | .62 |
| 4.0 | .73 | .64 | .58 | .71 | .63 | .57 | .69 | .62 | .56 | .66 | .61 | .56 | .64 | .59 | .55 | .53 |
| 5.0 | .65 | .56 | .50 | .64 | .56 | .50 | .62 | .55 | .49 | .60 | .53 | .48 | .58 | .52 | .48 | .46 |
| 6.0 | .59 | .50 | .44 | .58 | .49 | .43 | .56 | .48 | .43 | .54 | .48 | .43 | .53 | .47 | .42 | .40 |
| 7.0 | .53 | .44 | .38 | .52 | .44 | .38 | .51 | .43 | .38 | .49 | .43 | .38 | .48 | .42 | .37 | .36 |
| 8.0 | .48 | .40 | .34 | .48 | .40 | .34 | .46 | .39 | .34 | .45 | .39 | .34 | .44 | .38 | .34 | .32 |
| 9.0 | .44 | .36 | .31 | .44 | .36 | .31 | .43 | .36 | .31 | .42 | .35 | .30 | .41 | .35 | .30 | .28 |
| 10.0 | .41 | .33 | .28 | .40 | .33 | .28 | .39 | .33 | .28 | .39 | .32 | .28 | .38 | .32 | .28 | .26 |



H(β) Range:-90 - 90DEG
H(β) Interval: 0.2DEG
Test Speed: MEDIUM
Temperature:25.3DEG
Operators:HW
Test Date:02 September 2020

V(B) Range:-80 - 80DEG
V(B) Interval: 5.0DEG
Test System:EVERFINE GO-2000A_V1 SYSTEM V2.00.421
Humidity:65.0%
Test Distance:9.900m [K=1.0000]
Remarks:

WEC AND CCEC

| | | |
|--|----------------------|------------------|
| Test:U:119.76V I:0.0590A P:5.9887W PF:0.8478 Freq:59.98Hz Lamp Flux:241.244x1 lm | | |
| NAME: 3535RGB+2835NW-120D-120V | TYPE:LED Strip LIGHT | WEIGHT:1 |
| SPEC.:609.6*20MM | DIM.: 609.6*20MM | SERIAL No.:1 |
| MFR.: ESTAR | SUR.:609.6*20MM | Shielding Angle: |

| pcc | 80% | | | 70% | | | 50% | | | 30% | | | 10% | | | 0 | |
|------|-----------------------|------|------|------|------|------|---------------------------------|------|------|------|------|------|------|------|------|---|--|
| pw | 50% | 30% | 10% | 50% | 30% | 10% | 50% | 30% | 10% | 50% | 30% | 10% | 50% | 30% | 10% | 0 | |
| pfc | 20% | | | 20% | | | 20% | | | 20% | | | 20% | | | 0 | |
| RCR | RCR:Room Cavity Ratio | | | | | | Wall Exitance Coefficients(WEC) | | | | | | | | | | |
| 0.0 | | | | | | | | | | | | | | | | | |
| 1.0 | .281 | .160 | .051 | .274 | .156 | .050 | .261 | .150 | .048 | .249 | .144 | .046 | .238 | .138 | .044 | | |
| 2.0 | .271 | .149 | .046 | .265 | .146 | .045 | .254 | .141 | .044 | .243 | .136 | .043 | .233 | .132 | .042 | | |
| 3.0 | .255 | .136 | .041 | .250 | .134 | .040 | .240 | .130 | .039 | .230 | .126 | .039 | .221 | .123 | .038 | | |
| 4.0 | .238 | .124 | .036 | .233 | .122 | .036 | .224 | .119 | .036 | .216 | .116 | .035 | .208 | .113 | .034 | | |
| 5.0 | .222 | .113 | .033 | .218 | .112 | .033 | .210 | .109 | .032 | .202 | .107 | .032 | .195 | .104 | .031 | | |
| 6.0 | .207 | .104 | .030 | .203 | .103 | .030 | .196 | .101 | .029 | .189 | .098 | .029 | .183 | .096 | .029 | | |
| 7.0 | .194 | .096 | .027 | .190 | .095 | .027 | .184 | .093 | .027 | .178 | .091 | .027 | .172 | .090 | .026 | | |
| 8.0 | .182 | .089 | .025 | .179 | .088 | .025 | .173 | .086 | .025 | .167 | .085 | .024 | .162 | .083 | .024 | | |
| 9.0 | .171 | .083 | .023 | .168 | .082 | .023 | .163 | .080 | .023 | .158 | .079 | .023 | .153 | .078 | .023 | | |
| 10.0 | .161 | .077 | .021 | .158 | .077 | .021 | .154 | .075 | .021 | .149 | .074 | .021 | .145 | .073 | .021 | | |

| pcc | 80% | | | 70% | | | 50% | | | 30% | | | 10% | | | 0 |
|------|-----------------------|------|------|------|------|------|--|------|------|------|------|------|------|------|------|---|
| pw | 50% | 30% | 10% | 50% | 30% | 10% | 50% | 30% | 10% | 50% | 30% | 10% | 50% | 30% | 10% | 0 |
| pfc | 20% | | | 20% | | | 20% | | | 20% | | | 20% | | | 0 |
| RCR | RCR:Room Cavity Ratio | | | | | | Ceiling Cavity Exitance Coefficients(CCEC) | | | | | | | | | |
| 0.0 | .190 | .190 | .190 | .163 | .163 | .163 | .111 | .111 | .111 | .064 | .064 | .064 | .020 | .020 | .020 | |
| 1.0 | .178 | .156 | .137 | .153 | .134 | .118 | .104 | .092 | .081 | .060 | .053 | .047 | .019 | .017 | .015 | |
| 2.0 | .170 | .132 | .100 | .145 | .114 | .087 | .100 | .079 | .061 | .057 | .046 | .036 | .018 | .015 | .012 | |
| 3.0 | .162 | .114 | .076 | .139 | .099 | .066 | .095 | .068 | .046 | .055 | .040 | .027 | .018 | .013 | .009 | |
| 4.0 | .154 | .101 | .060 | .132 | .087 | .052 | .091 | .061 | .037 | .053 | .036 | .022 | .017 | .012 | .007 | |
| 5.0 | .147 | .090 | .048 | .126 | .078 | .042 | .087 | .055 | .030 | .050 | .032 | .018 | .016 | .010 | .006 | |
| 6.0 | .140 | .082 | .040 | .120 | .071 | .035 | .083 | .050 | .025 | .048 | .029 | .015 | .016 | .010 | .005 | |
| 7.0 | .133 | .075 | .034 | .115 | .065 | .030 | .079 | .046 | .021 | .046 | .027 | .012 | .015 | .009 | .004 | |
| 8.0 | .127 | .069 | .029 | .110 | .060 | .025 | .076 | .042 | .018 | .044 | .025 | .011 | .014 | .008 | .004 | |
| 9.0 | .121 | .064 | .026 | .105 | .056 | .022 | .072 | .039 | .016 | .042 | .023 | .009 | .014 | .008 | .003 | |
| 10.0 | .116 | .060 | .023 | .100 | .052 | .020 | .069 | .037 | .014 | .040 | .022 | .008 | .013 | .007 | .003 | |

H(β) Range:-90 - 90DEG
H(β) Interval: 0.2DEG
Test Speed: MEDIUM
Temperature:25.3DEG
Operators:HW
Test Date:02 September 2020

V(B) Range:-80 - 80DEG
V(B) Interval: 5.0DEG
Test System:EVERFINE GO-2000A_V1 SYSTEM V2.00.421
Humidity:65.0%
Test Distance:9.900m [K=1.0000]
Remarks:

UGR(Unified Glare Rating) Table

| | | | | | | | | | | |
|--|------------------|------|------|------|----------------------|----------------|------|------------------|------|------|
| Test:U:119.76V I:0.0590A P:5.9887W PF:0.8478 Freq:59.98Hz Lamp Flux:241.244x1 lm | | | | | | | | | | |
| NAME: 3535RGB+2835NW-120D-120V | | | | | TYPE:LED Strip LIGHT | | | WEIGHT:1 | | |
| SPEC.:609.6*20MM | | | | | DIM.: 609.6*20MM | | | SERIAL No.:1 | | |
| MFR.: ESTAR | | | | | SUR.:609.6*20MM | | | Shielding Angle: | | |
| ceiling/cavity | 0.7 | 0.7 | 0.5 | 0.5 | 0.3 | 0.7 | 0.7 | 0.5 | 0.5 | 0.3 |
| walls | 0.5 | 0.3 | 0.5 | 0.3 | 0.3 | 0.5 | 0.3 | 0.5 | 0.3 | 0.3 |
| working plane | 0.2 | 0.2 | 0.2 | 0.2 | 0.2 | 0.2 | 0.2 | 0.2 | 0.2 | 0.2 |
| Room dimensions | Viewed crosswise | | | | | Viewed endwise | | | | |
| x = 2H y = 2H | 23.6 | 25.1 | 23.9 | 25.3 | 25.5 | 24.5 | 25.9 | 24.7 | 26.1 | 26.3 |
| 3H | 24.5 | 25.8 | 24.8 | 26.1 | 26.3 | 25.4 | 26.8 | 25.7 | 27.0 | 27.2 |
| 4H | 24.7 | 25.9 | 25.0 | 26.2 | 26.4 | 25.7 | 27.0 | 26.0 | 27.2 | 27.5 |
| 6H | 24.8 | 26.0 | 25.1 | 26.2 | 26.5 | 25.8 | 27.0 | 26.1 | 27.3 | 27.6 |
| 8H | 24.8 | 25.9 | 25.1 | 26.2 | 26.5 | 25.8 | 27.0 | 26.1 | 27.2 | 27.5 |
| 12H | 24.7 | 25.9 | 25.1 | 26.1 | 26.4 | 25.7 | 26.9 | 26.1 | 27.2 | 27.5 |
| 4H 2H | 24.1 | 25.4 | 24.4 | 25.6 | 25.9 | 24.8 | 26.1 | 25.1 | 26.3 | 26.6 |
| 3H | 25.1 | 26.2 | 25.4 | 26.5 | 26.8 | 25.8 | 26.9 | 26.2 | 27.2 | 27.5 |
| 4H | 25.3 | 26.3 | 25.7 | 26.7 | 27.0 | 26.2 | 27.2 | 26.5 | 27.5 | 27.8 |
| 6H | 25.5 | 26.4 | 25.9 | 26.7 | 27.1 | 26.4 | 27.2 | 26.7 | 27.6 | 28.0 |
| 8H | 25.5 | 26.3 | 25.9 | 26.7 | 27.1 | 26.4 | 27.2 | 26.8 | 27.6 | 27.9 |
| 12H | 25.5 | 26.3 | 25.9 | 26.7 | 27.1 | 26.3 | 27.1 | 26.7 | 27.5 | 27.9 |
| 8H 4H | 25.4 | 26.2 | 25.8 | 26.6 | 27.0 | 26.2 | 27.0 | 26.6 | 27.4 | 27.8 |
| 6H | 25.6 | 26.3 | 26.1 | 26.7 | 27.2 | 26.4 | 27.1 | 26.9 | 27.5 | 27.9 |
| 8H | 25.7 | 26.3 | 26.2 | 26.7 | 27.2 | 26.5 | 27.1 | 26.9 | 27.5 | 27.9 |
| 12H | 25.8 | 26.3 | 26.2 | 26.7 | 27.2 | 26.4 | 27.0 | 26.9 | 27.4 | 27.9 |
| 12H 4H | 25.4 | 26.1 | 25.8 | 26.5 | 26.9 | 26.2 | 26.9 | 26.6 | 27.3 | 27.7 |
| 6H | 25.6 | 26.3 | 26.1 | 26.7 | 27.1 | 26.4 | 27.0 | 26.9 | 27.5 | 27.9 |
| 8H | 25.7 | 26.3 | 26.2 | 26.7 | 27.2 | 26.5 | 27.0 | 26.9 | 27.4 | 27.9 |
| Variations with the observer position at spacings: | | | | | | | | | | |
| S = 1.0H | + 0.3 / - 0.4 | | | | | + 0.2 / - 0.3 | | | | |
| 1.5H | + 0.2 / - 0.4 | | | | | + 0.3 / - 0.4 | | | | |
| 2.0H | + 0.6 / - 0.6 | | | | | + 0.6 / - 0.7 | | | | |

CIE Pub.117, 241.2 lm Total Lamp Luminous Flux Correct (8log(F/F0) = -4.9)
Area: 0.012192 m2

H(β) Range:-90 - 90DEG
H(β) Interval: 0.2DEG
Test Speed: MEDIUM
Temperature:25.3DEG
Operators:HW
Test Date:02 September 2020

V(B) Range:-80 - 80DEG
V(B) Interval: 5.0DEG
Test System:EVERFINE GO-2000A_V1 SYSTEM V2.00.421
Humidity:65.0%
Test Distance:9.900m [K=1.0000]
Remarks:

UTILIZATION FACTORS TABLE

| | | |
|--|----------------------|------------------|
| Test:U:119.76V I:0.0590A P:5.9887W PF:0.8478 Freq:59.98Hz Lamp Flux:241.244x1 lm | | |
| NAME: 3535RGB+2835NW-120D-120V | TYPE:LED Strip LIGHT | WEIGHT:1 |
| SPEC.:609.6*20MM | DIM.: 609.6*20MM | SERIAL No.:1 |
| MFR.: ESTAR | SUR.:609.6*20MM | Shielding Angle: |

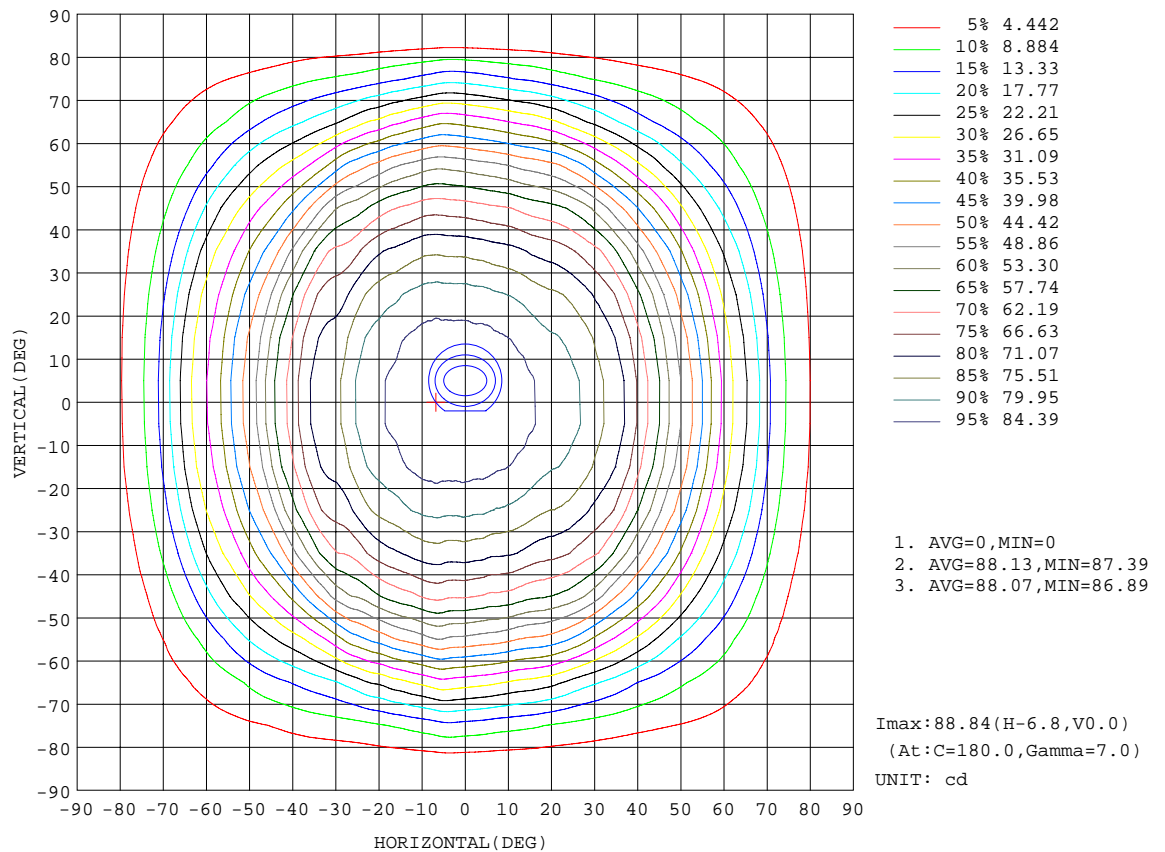
| REFLECTANCE | | | | | | | | | | |
|----------------------------------|---|-----|-----|-----|-----|-----|-----|-----|-----|--------|
| Ceiling | 0.8 | 0.8 | 0.8 | 0.7 | 0.7 | 0.7 | 0.5 | 0.5 | 0.5 | 0 |
| Walls | 0.7 | 0.5 | 0.3 | 0.7 | 0.5 | 0.3 | 0.7 | 0.5 | 0.3 | 0 |
| Working plane | 0.2 | 0.2 | 0.2 | 0.2 | 0.2 | 0.2 | 0.2 | 0.2 | 0.2 | 0 |
| ROOM INDEX | UTILIZATION FACTORS(PERCENT) k(RI) x RCR = 5 | | | | | | | | | |
| k = 0.60 | 59 | 48 | 41 | 58 | 48 | 41 | 57 | 47 | 41 | 34 |
| 0.80 | 70 | 58 | 51 | 69 | 58 | 51 | 67 | 57 | 51 | 44 |
| 1.00 | 78 | 68 | 61 | 77 | 67 | 60 | 75 | 68 | 60 | 53 |
| 1.25 | 85 | 76 | 69 | 84 | 75 | 68 | 81 | 73 | 68 | 61 |
| 1.50 | 90 | 81 | 75 | 89 | 80 | 74 | 86 | 78 | 73 | 66 |
| 2.00 | 97 | 89 | 83 | 95 | 88 | 82 | 92 | 86 | 81 | 73 |
| 2.50 | 101 | 93 | 88 | 99 | 92 | 87 | 95 | 89 | 85 | 77 |
| 3.00 | 104 | 98 | 92 | 102 | 96 | 91 | 98 | 93 | 89 | 81 |
| 4.00 | 108 | 102 | 98 | 105 | 101 | 97 | 101 | 97 | 94 | 85 |
| 5.00 | 110 | 105 | 102 | 107 | 103 | 100 | 103 | 100 | 97 | 88 |
| ROOM INDEX | UF(total) | | | | | | | | | Direct |
| According to DIN EN 13032-2 2004 | | | | | | | | | | |
| Suspended | | | | | | | | | | |
| SHRNM = 1.25 | | | | | | | | | | |

$H(\beta)$ Range:-90 - 90DEG
 $H(\beta)$ Interval: 0.2DEG
 Test Speed: MEDIUM
 Temperature:25.3DEG
 Operators:HW
 Test Date:02 September 2020

$V(B)$ Range:-80 - 80DEG
 $V(B)$ Interval: 5.0DEG
 Test System:EVERFINE GO-2000A_V1 SYSTEM V2.00.421
 Humidity:65.0%
 Test Distance:9.900m [K=1.0000]
 Remarks:

ISOCANDELA DIAGRAM

| | | |
|--|----------------------|------------------|
| Test:U:119.76V I:0.0590A P:5.9887W PF:0.8478 Freq:59.98Hz Lamp Flux:241.244x1 lm | | |
| NAME: 3535RGB+2835NW-120D-120V | TYPE:LED Strip LIGHT | WEIGHT:1 |
| SPEC.:609.6*20MM | DIM.: 609.6*20MM | SERIAL No.:1 |
| MFR.: ESTAR | SUR.:609.6*20MM | Shielding Angle: |

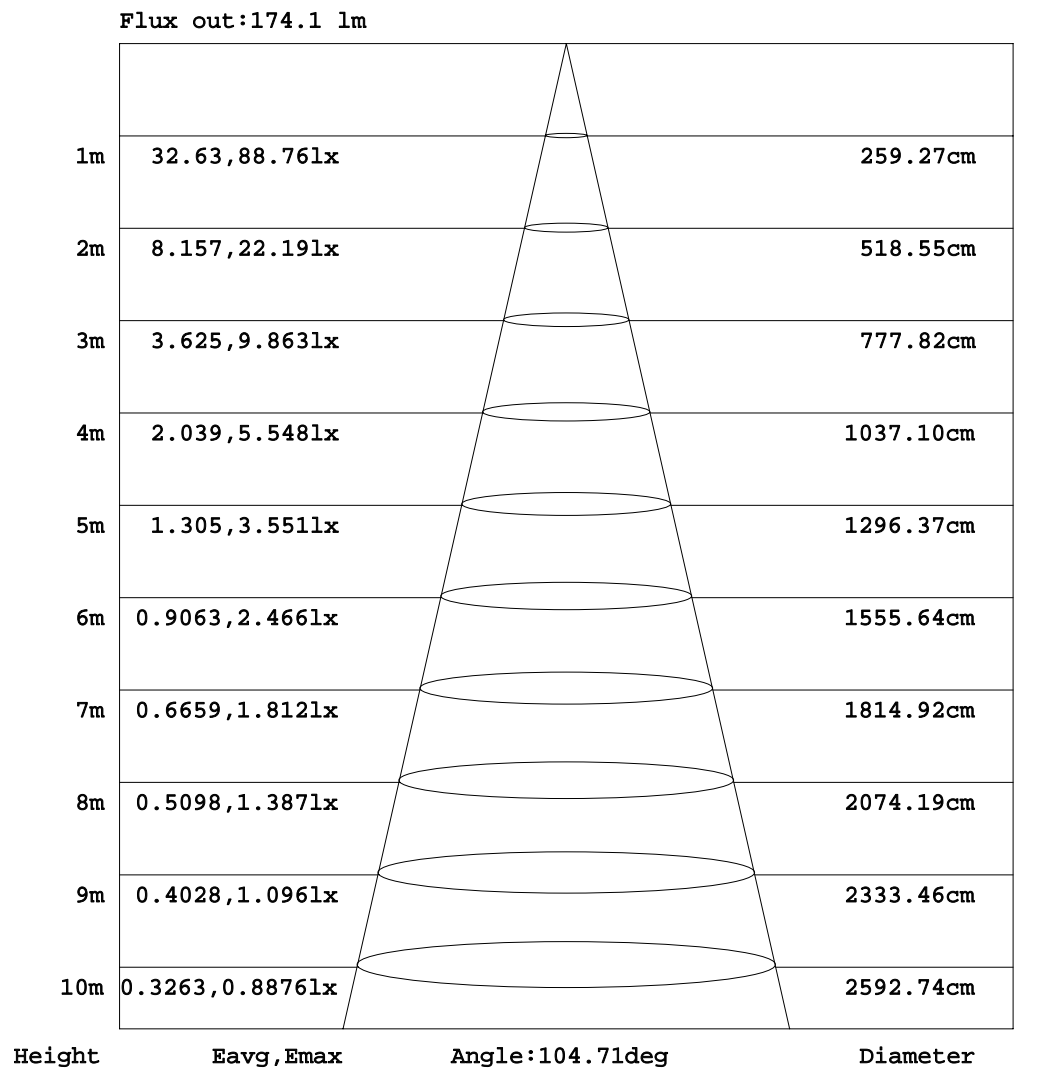


H(β) Range:-90 - 90DEG
H(β) Interval: 0.2DEG
Test Speed: MEDIUM
Temperature:25.3DEG
Operators:HW
Test Date:02 September 2020

V(B) Range:-80 - 80DEG
V(B) Interval: 5.0DEG
Test System:EVERFINE GO-2000A_V1 SYSTEM V2.00.421
Humidity:65.0%
Test Distance:9.900m [K=1.0000]
Remarks:

AAI Figure

| | | |
|--|----------------------|------------------|
| Test:U:119.76V I:0.0590A P:5.9887W PF:0.8478 Freq:59.98Hz Lamp Flux:241.244x1 lm | | |
| NAME: 3535RGB+2835NW-120D-120V | TYPE:LED Strip LIGHT | WEIGHT:1 |
| SPEC.:609.6*20MM | DIM.: 609.6*20MM | SERIAL No.:1 |
| MFR.: ESTAR | SUR.:609.6*20MM | Shielding Angle: |



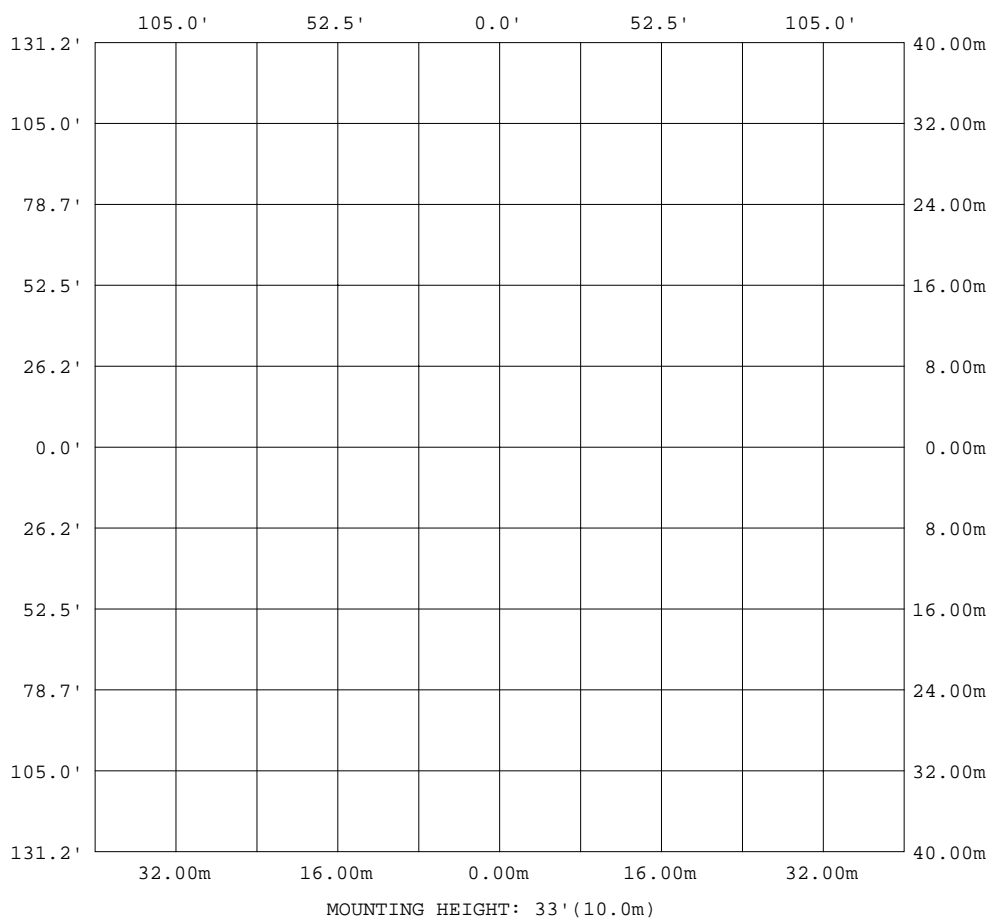
Note:The Curves indicate the illuminated area and the average illumination when the luminaire is at different distance.

H(β) Range:-90 - 90DEG
H(β) Interval: 0.2DEG
Test Speed: MEDIUM
Temperature:25.3DEG
Operators:HW
Test Date:02 September 2020

V(B) Range:-80 - 80DEG
V(B) Interval: 5.0DEG
Test System:EVERFINE GO-2000A_V1 SYSTEM V2.00.421
Humidity:65.0%
Test Distance:9.900m [K=1.0000]
Remarks:

ISOLUX DIAGRAM

| | | |
|--|----------------------|------------------|
| Test:U:119.76V I:0.0590A P:5.9887W PF:0.8478 Freq:59.98Hz Lamp Flux:241.244x1 lm | | |
| NAME: 3535RGB+2835NW-120D-120V | TYPE:LED Strip LIGHT | WEIGHT:1 |
| SPEC.:609.6*20MM | DIM.: 609.6*20MM | SERIAL No.:1 |
| MFR.: ESTAR | SUR.:609.6*20MM | Shielding Angle: |



H(β) Range:-90 - 90DEG
H(β) Interval: 0.2DEG
Test Speed: MEDIUM
Temperature:25.3DEG
Operators:HW
Test Date:02 September 2020

V(B) Range:-80 - 80DEG
V(B) Interval: 5.0DEG
Test System:EVERFINE GO-2000A_V1 SYSTEM V2.00.421
Humidity:65.0%
Test Distance:9.900m [K=1.0000]
Remarks:

LED Avg.L Report

| | | |
|--|----------------------|------------------|
| Test:U:119.76V I:0.0590A P:5.9887W PF:0.8478 Freq:59.98Hz Lamp Flux:241.244x1 lm | | |
| NAME: 3535RGB+2835NW-120D-120V | TYPE:LED Strip LIGHT | WEIGHT:1 |
| SPEC.:609.6*20MM | DIM.: 609.6*20MM | SERIAL No.:1 |
| MFR.: ESTAR | SUR.:609.6*20MM | Shielding Angle: |

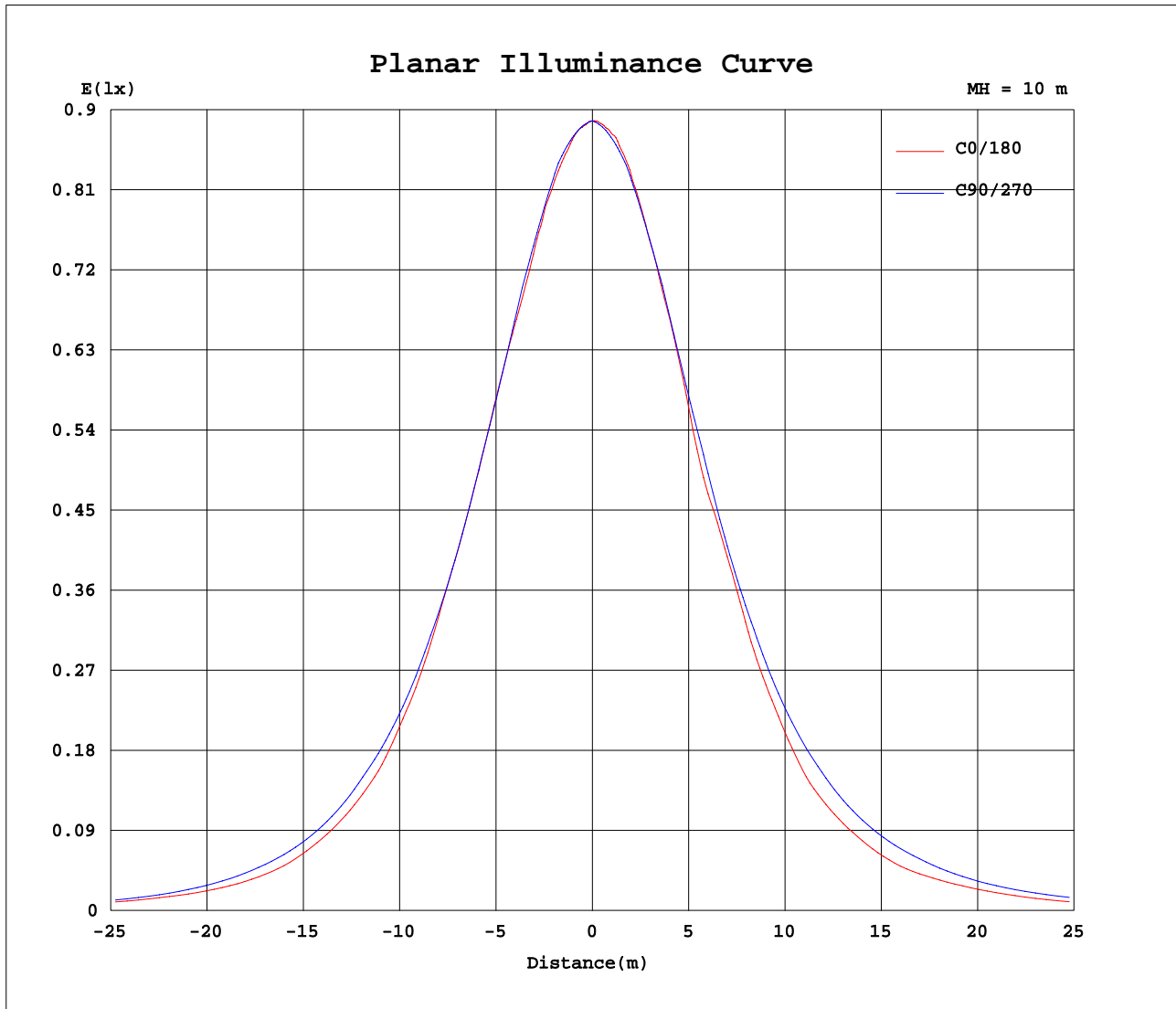
| AvgL | cd/m2 |
|----------------|-------|
| L_0~180(65)av | 4586 |
| L_0~180(75)av | 2657 |
| L_0~180(85)av | 1681 |
| L_90~270(65)av | 6088 |
| L_90~270(75)av | 4357 |
| L_90~270(85)av | 0 |
| L_45(65)av | 4764 |
| L_45(75)av | 2850 |
| L_45(85)av | 1112 |

Standard: GB/T 29293-2012

H(β) Range:-90 - 90DEG
H(β) Interval: 0.2DEG
Test Speed: MEDIUM
Temperature:25.3DEG
Operators:HW
Test Date:02 September 2020

V(B) Range:-80 - 80DEG
V(B) Interval: 5.0DEG
Test System:EVERFINE GO-2000A_V1 SYSTEM V2.00.421
Humidity:65.0%
Test Distance:9.900m [K=1.0000]
Remarks:

Planar Illuminance Curve



H(β) Range:-90 - 90DEG
H(β) Interval: 0.2DEG
Test Speed: MEDIUM
Temperature:25.3DEG
Operators:HW
Test Date:02 September 2020

V(B) Range:-80 - 80DEG
V(B) Interval: 5.0DEG
Test System:EVERFINE GO-2000A_V1 SYSTEM V2.00.421
Humidity:65.0%
Test Distance:9.900m [K=1.0000]
Remarks:

V(B) Range:-80 - 80DEG
V(B) Interval: 5.0DEG
Test System:EVERFINE GO-2000A_V1 SYSTEM V2.00.421
Humidity:65.0%
Test Distance:9.900m [K=1.0000]
Remarks:

V(B) Range:-80 - 80DEG
V(B) Interval: 5.0DEG
Test System:EVERFINE GO-2000A_V1 SYSTEM V2.00.421
Humidity:65.0%
Test Distance:9.900m [K=1.0000]
Remarks:

V(B) Range:-80 - 80DEG
V(B) Interval: 5.0DEG
Test System:EVERFINE GO-2000A_V1 SYSTEM V2.00.421
Humidity:65.0%
Test Distance:9.900m [K=1.0000]
Remarks:

V(B) Range:-80 - 80DEG
V(B) Interval: 5.0DEG
Test System:EVERFINE GO-2000A_V1 SYSTEM V2.00.421
Humidity:65.0%
Test Distance:9.900m [K=1.0000]
Remarks: