

LED CONTROLLER

INSTALLATION GUIDE

GENERAL

This LED controller connects with multi color LED strips and is controlled by Apps via Wi-Fi. It must be installed in accordance with Article 450 of the National Electric code (N.E.C.) when used Indoors. The controller must be installed in a well-ventilated area free from explosive gases and vapors. Proper operation requires the free flow of air.

PRECAUTIONS BEFORE INSTALLING

Check the label and ensure the LED controller has the proper input DC voltage and LED strip load for the job. Ensure the LED controller model matches LED strip model.

MOUNTING

Select a suitable location capable of supporting the weight of the LED controller.

QUICK SPECS

Input Voltage	See individual product spec sheets or label
Maximum Load	
Operating Temp	-4° ~ 122°F (-20° ~ 50°C)
Environment	Dry and Damp Location / Indoor

INPUT VOLTAGE NOTE!

The input voltage: 12VDC to 24VDC
ENSURE to power the controller with the correct voltage, wattage and polarity!

DO NOT INSTALL IN AN ENVIRONMENT THAT IS OUTSIDE OF THE PRODUCTS LISTED AMBIENT TEMPERATURE.

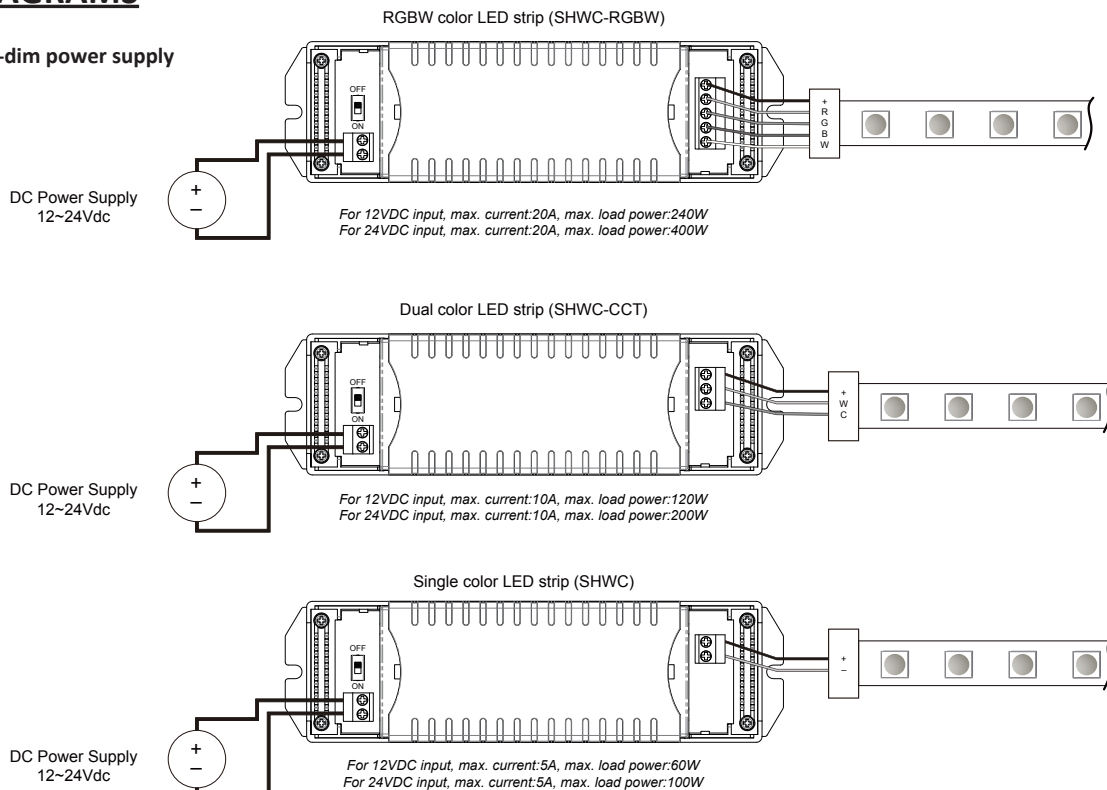
INSTALLATION

1. Unscrew and remove the input and output cover for the LED controller.
2. Prepare stripped wires with requirement below:
 - Stripping length: 1/4"
 - Wire gauge range: #12 ~ #18 AWG
 - Wire must be rated for 90°C or above.
3. Feed each wire into each terminal at input and output and screw tightly.
4. Connect each wire with reference to wiring diagram according to the controller models.
5. Verify all connections; switch ON both power supply and the LED controller to check for proper operation.
6. Install cover at both input and output sides.

Remark: Ensure correct LED strip wiring for each terminal by referring to unit label.

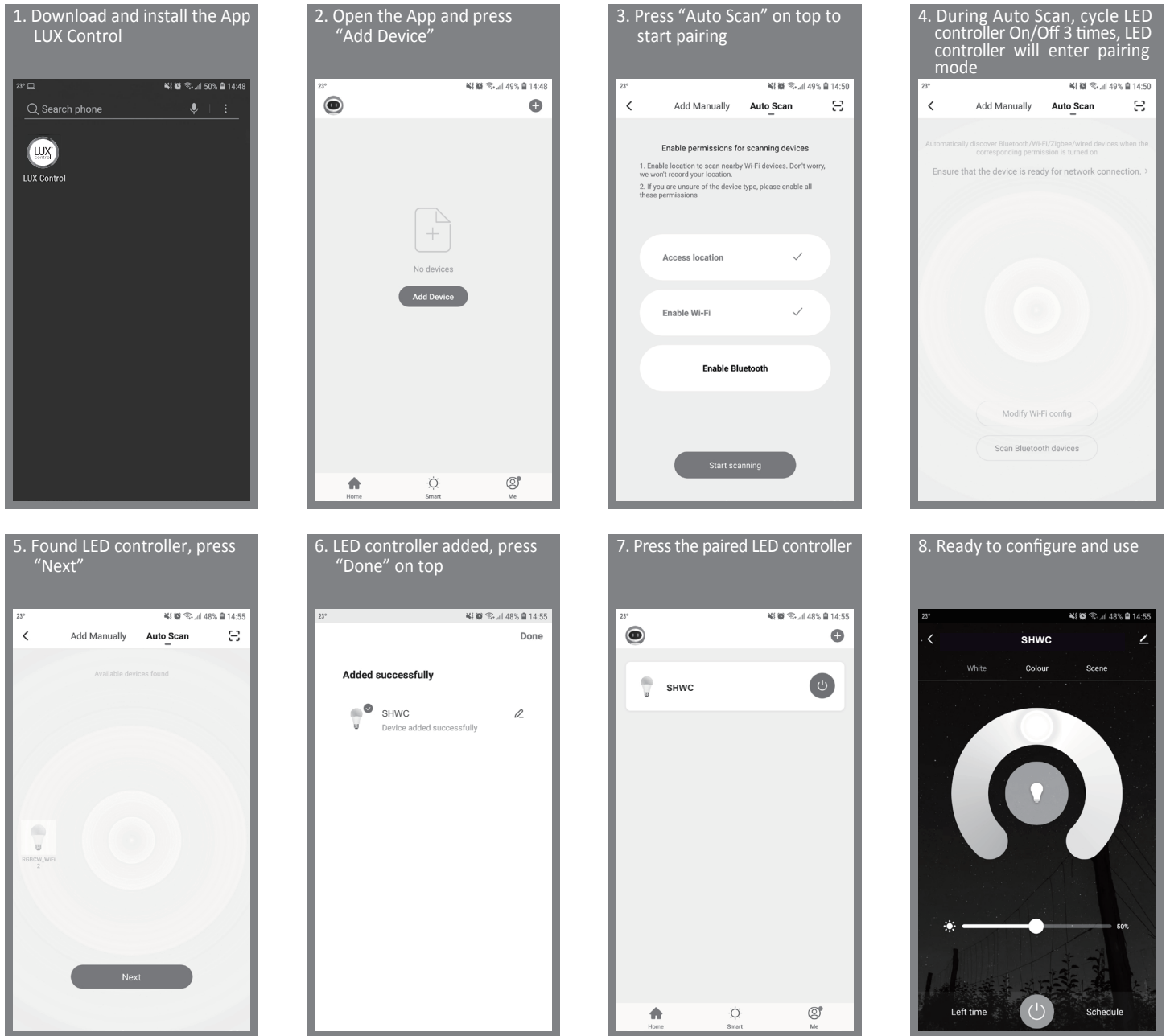
WIRING DIAGRAMS

Important:
Must be a non-dim power supply



See LED strip specifications for maximum series run limits.

PAIRING



Note: Verify Wi-Fi is set to 2.4GHz. To get controller into pairing mode are ON/OFF switch next to the controller DC power supply terminal.

TROUBLESHOOTING

Cannot detect/configure the LED controller:	<ul style="list-style-type: none"> • Turn the switch ON at input side of LED controller. • Ensure the mobile phone or tablet and LED controller are both in the same 2.4GHz Wi-Fi network.
Fixture does not illuminate:	<ul style="list-style-type: none"> • Ensure all connections are properly secured. • Check +/- polarity on input, output and DC power supply. • Ensure DC power supply input is 12Vdc~24Vdc, also match the LED strip input voltage. • Turn the switch ON inside at input side of LED controller.
Fixture is not bright enough:	<ul style="list-style-type: none"> • Ensure sufficient power for DC power supply, recommended to use with 80% of maximum load. • Total loads exceed maximum load power.
Fixture color is not correct:	<ul style="list-style-type: none"> • Ensure LED strip connection is matched according to wiring diagram.



©2020 GM Lighting
Specifications are subject to change without notice.

18700 Ridgeland Ave.,
Tinley Park, IL 60477

Toll-Free: (866) 671-0811
FAX: (708) 478-2640

www.gmlighting.net
tech@gmlighting.net