

BEFORE YOU START:

- Please check local electrical codes before beginning
- Turn power off before installing
- Make sure to use proper rated wire

TOOLS NEEDED:

- Phillips Screwdriver
- Caulk Gun (optional)

INSTALLATION:

Install two screws (furnished) into junction box. Do not fully drive screws in. (Fig. 1)

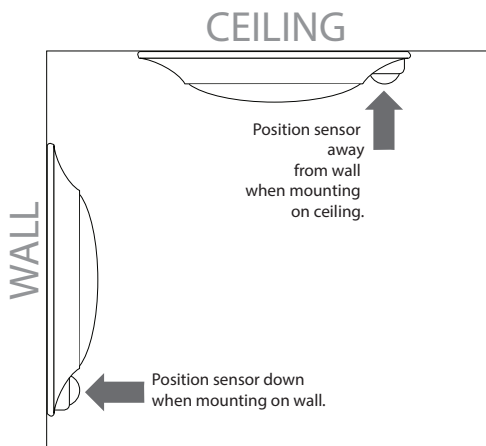
Connect supply wires to wires in fixture wiring box using wire nuts (by others). Connect white to white, black to black, and green or bare copper wire to bare copper wire. (Fig. 2)

If there is a ground wire at junction box, secure it to ground screw.

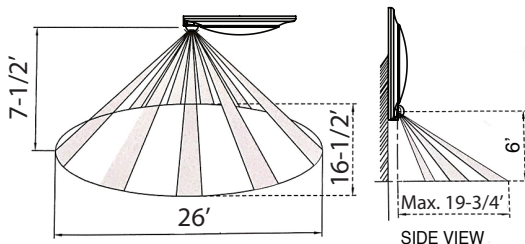
Using a Phillips screwdriver, attach the fixture housing to the junction box. (Fig. 3) If mounting on ceiling, position sensor away from wall if wall is within 5 feet of fixture. If mounting on wall, position sensor in down position. See below.

Press and twist the diffuser into housing, and twist to lock in place. (Fig. 4)

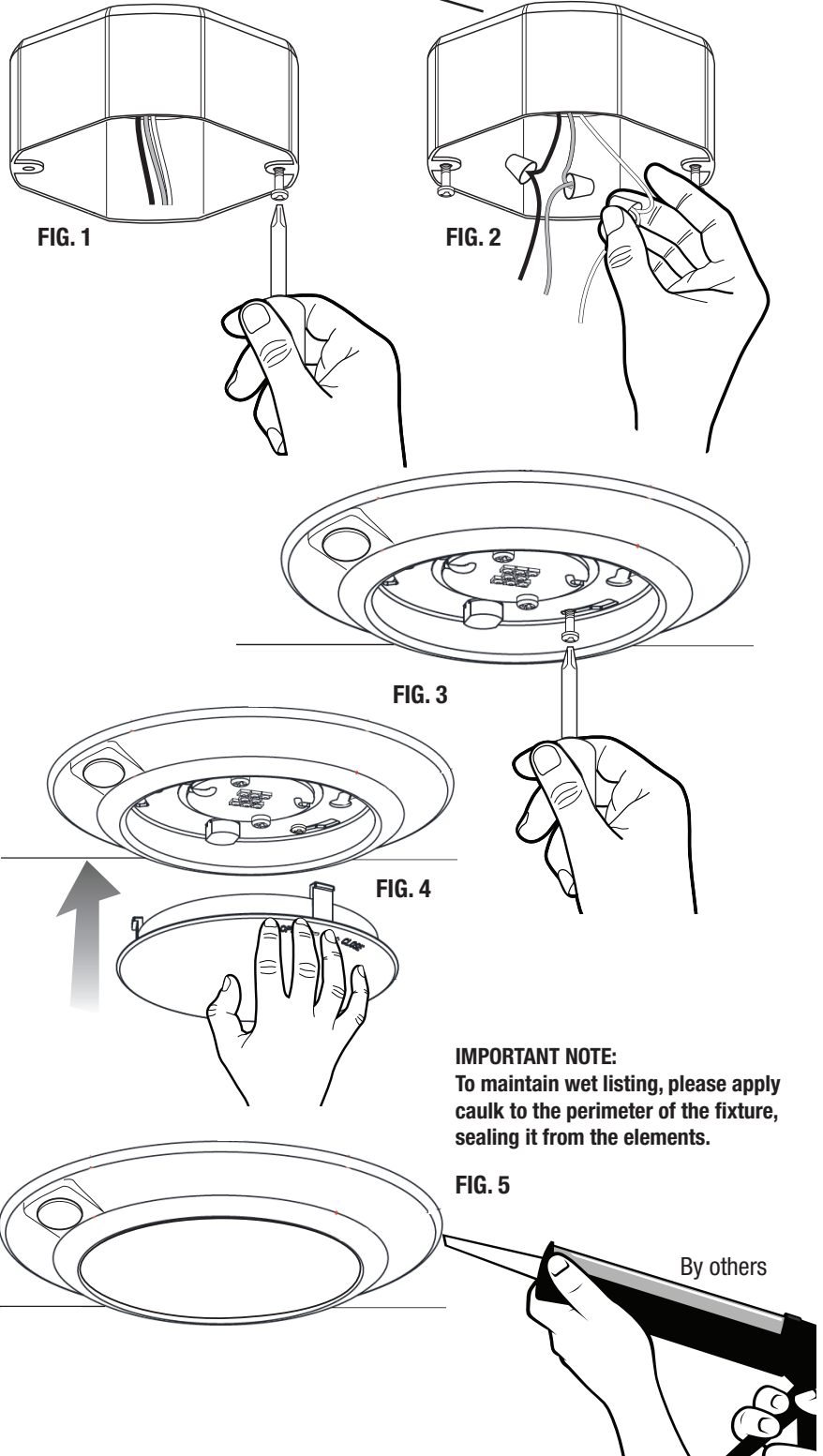
For gaps caused by uneven ceiling: Seal joint between edge of fixture and surface. (Fig. 5)



Sensor Detection Range:



J-BOX BY OTHERS



IMPORTANT NOTE:

To maintain wet listing, please apply caulk to the perimeter of the fixture, sealing it from the elements.

FIG. 5

By others