

GM Lighting

XENON UNDERCABINET ACCENT LIGHTING - 12V XENON

Project: _____

Fixture Type: _____

Location: _____

Contact Phone: _____

PRODUCT DESCRIPTION

GM Lighting's Xenon Undercabinet Accent Lighting puck is a 2-7/8" diameter surface or recessed mounted luminaire available in white, black, chrome, brushed nickel and bronze.

PRODUCT SPECIFICATIONS

Fixture Construction: Two-piece, low profile (1" height) steel surface mount ring with matching lens holder that allows for either flush mount or surface mount recessed mounting. Frosted lens included.

Electrical: Puck comes complete with 48" leads and Molex® connector. Select transformer from remote transformer page of catalog. Catalog is available for download at www.gmlighting.net

Lens: Tempered frosted glass lens affixed permanently to lens holder.

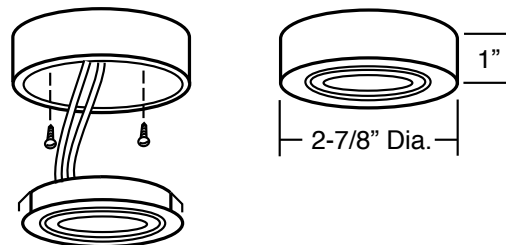
Installation: See installation diagram below.

NOTE: For recessed, cut 2-5/8" hole.

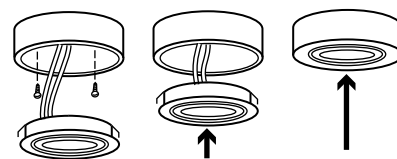
Lamp: 20W bi-pin Xenon.

Label: UL listed.

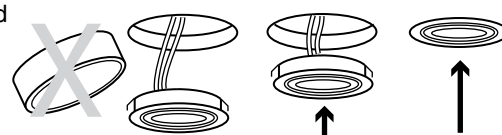
3-light kit available



Surface mount diagram



Recessed mount diagram



ORDERING INFORMATION

Cat. No.	Watts	Color	Dimensions
XP20-W	20W	White	2-7/8" x 1"
XP20-B	20W	Black	2-7/8" x 1"
XP20-C	20W	Chrome	2-7/8" x 1"
XP20-BNK	20W	Brushed Nickel	2-7/8" x 1"
XP20-BZ	20W	Bronze	2-7/8" x 1"



GM Lighting

www.gmlighting.net • www.lumentask.com

Telephone: (708) 671-0811 Toll-Free: (866) 671-0811 FAX: (708) 448-8545

e-mail: gmlightingllc@sbcglobal.net • Specifications subject to change without notice. Patent pend-